

Find the best solution
for your testing needs

Analytical Test Kits and Instruments

Catalogue 2023

Food, Feed, Animal Health and
Environmental Applications



Analytical Test Kits and Instruments

Catalogue 2023

Food, Feed, Animal Health and
Environmental Applications

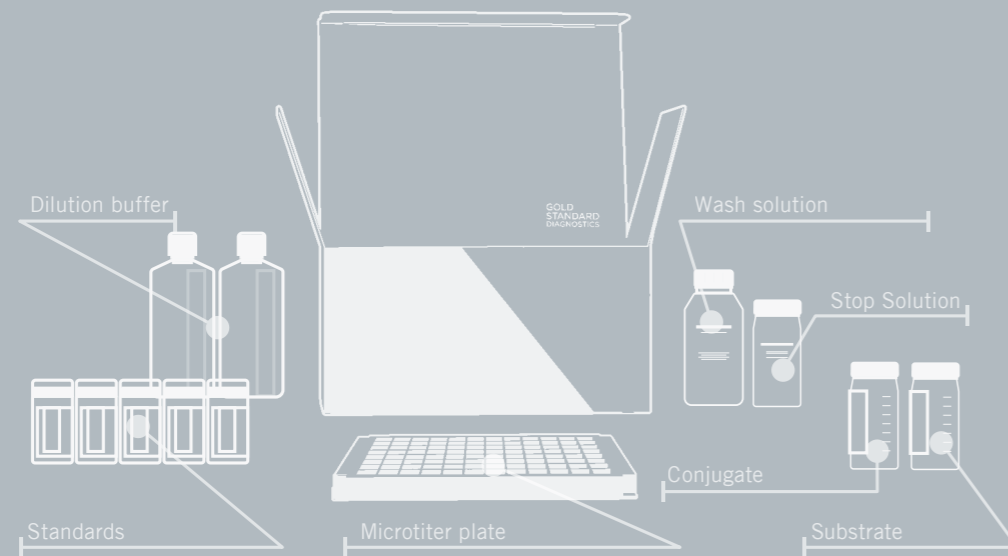


TABLE OF CONTENTS

- Contacts and Locations 6
- ALLERGENS 9**
 - SENSISpec Allergen Detection ELISA Kits 10
 - Supplementary Products..... 10
 - SENSISpec Gluten Detection ELISA Kits..... 11
 - SENSISpec Allergen Spike Solutions 11
 - Allergen Control Materials **NEW!**..... 11
 - SENSIStrip Lateral Flow Tests **NEW!**..... 12
 - RapidScan ST5-W Lateral Flow Reader 12
 - SENSISwab Swabbing Solution 12
- VITAMIN ANALYSIS 15**
 - SENSISpec ELISA Vitamin Kits..... 15
 - SENSIColumn Vitamin
Immunoaffinity Columns..... 15
- FOOD PATHOGENS 17**
 - Solutions for Sampling 18
 - Microgen® Path-Chek Kits **NEW!** 18
 - Solutions for Analysis 18
 - BACGene Real-Time PCR Kits 18
 - Free DNA Removal..... 18
 - Enrichment Media for BACGene*..... 18
 - Waterborne Bacterial Pathogens:
Real-time PCR Kits 19
 - BACGene Accessory Items 19
 - BACSpec ELISA Kits..... 19
 - Solutions for Confirmation 19
 - Microgen® Biochemical
Identification Kits **NEW!** 19
 - Microgen® Latex Agglutination Kits **NEW!**..... 20
 - O157 and non-O157 STEC Detection 20
 - IMS Beads for the use with
BACGene E.coli STEC Solution..... 20
- FOODBORNE VIRUSES 23**
 - VIRSeek Qualitative Real-Time RT-PCR 23
 - VIRSeek RNA Extraction..... 23
 - VIRSeek Food Process Control..... 23
- SARS-COV-2 VIRUS 25**
 - VIRSeek Surface and Wastewater Solutions ... 25

- MYCOTOXINS 27**
 - B ZERO® Quantitative ELISA Test Kits 28
 - Celer® Quantitative ELISA Test Kits 28
 - I'screen Quantitative ELISA Test Kits 28
 - Water-based Quantitative ELISA Test Kits..... 29
 - ABRAXIS® Patulin Test Kit **NEW!**..... 29
 - SENSIColumn Immunoaffinity Columns 29
 - Supplementary Products..... 30
- GENETICALLY MODIFIED ORGANISMS (GMO) 33**
 - SpeciesScreen & SpeciesIdent 34
 - GMOscreen Kits 34
 - GMO PCR Testing Kits for Corn/Maize 35
 - GMO PCR Testing Kits for Soybean 37
 - GMO PCR Testing Kits for Canola/Rapeseed .. 38
 - GMO PCR Testing Kits for Cotton..... 39
 - GMO PCR Testing Kits for Other Species 39
 - GMO ELISA Testing Kits 42
 - GMO Lateral Flow Devices 42
 - RapidScan ST5-W Lateral Flow Assay Reader 43
 - GMO Lateral Flow Strips for
RapidScan ST5-W Lateral Flow Reader 43
- NUCLEIC ACID ISOLATION 45**
 - DNA Isolation Offering..... 45
- VETERINARY DRUG RESIDUES AND ADDITIVES 47**
 - I'screen Quantitative ELISA Test Kits 48
 - I'screen Rapid ELISA Test Kits 48
 - B ZERO® Quantitative ELISA Test Kit..... 48
 - Other Kits to Detect Veterinary Drug Residues and Additives..... 49
- BIOGENIC AMINE 49**
 - Histamine Kits..... 49
- ANIMAL SPECIES 51**
 - DNAnimal Kits..... 52
 - Control DNAs..... 53

- ENVIRONMENT AND WATER..... 57**
 - Algal Toxins ELISA Plate & Tube Test Kits 58
 - ABRAXIS® Algal Toxins Dipstick Test Kits 58
 - ABRAXIS® Algal Toxins Standards..... 58
 - ABRAXIS® Algal Toxins QC Materials..... 59
 - ABRAXIS® Algal Toxins Related Products..... 59
 - Industrial Chemicals / Hydrocarbons 60
 - ABRAXIS® Industrial Chemicals / Hydrocarbons
Related Products 60
 - ABRAXIS® Markers for Bioactivity..... 60
 - ELISA Plate, Tube & Test Strip Readers &
Equipment 60
 - ABRAXIS® Pesticides 61
 - ABRAXIS® Pesticides: Glyphosate..... 61
 - Vitellogenins..... 61
- LIFE SCIENCES / R&D 62**
 - AbraMag® Magnetic Purification Kits..... 62
 - Magnetic Separator Racks 62
 - AbraMag® Magnetic Beads..... 62
- VETERINARY DIAGNOSTICS 65**
 - Serological Assays..... 65
 - MULTISPECIES specialities 66
 - PORCINE specialities 67
 - RUMINANTS specialities..... 68
 - CANINE specialities..... 72
 - RABBIT specialities 73
 - FELINE specialities..... 74
 - EQUINE specialities..... 74

- VETLINE Assays 75
- CANINE specialities 75
- FELINE specialities..... 75
- MULTISPECIES specialities 76
- PORCINE specialities 76
- AVIAN specialities..... 76
- RUMINANT specialities 76
- Real-Time PCR Assays **NEW!**..... 78
- PCR Kits for CATTLE 78
- PCR Kits for SMALL RUMINANTS..... 78
- PCR Kits for SWINE 79
- PCR Kits for POULTRY 80
- PCR Kits for PETS 80
- PCR Kits for EQUINE 81
- PCR Kits for RABBIT..... 81
- PCR Kits for AQUACULTURE 81
- PCR Kits for MINK..... 81

- INSTRUMENTS 83**
 - ThunderBolt®..... 84
 - The Bolt™ 84
 - Nucleic Acid Purification System:
GSD Auto-Pure 96 85
 - Real-time PCR System: AriaMX™..... 85
 - RapidScan ST5-W Lateral Flow Assay Reader 86
 - GSD Absorbance 96 ELISA Reader **NEW!**..... 86

Product Overview



Test Kits / Methods	ELISA	LFD	PCR	IAC	LFD Reader	ELISA Reader	ELISA Analyzer
Food Allergens	•	•	Soon		•	•	•
Food Pathogens	•		•			•	•
Food Viruses			•				
GMOs	•	•	•		•	•	
Mycotoxins	•			•		•	•
Vet Drug Residues	•					•	•
Animal Species			•				
Vet Diagnostics	•	•	•			•	•
Vitamin Analysis	•			•		•	
Pesticides	•	•			•	•	•
Environment & Water	•	•			•	•	•

FIND THE BEST SOLUTION

for your in-house testing operations

Rapid testing technologies: a growing market

The on-site testing solutions market has seen significant growth over the past few years, including not only food and feed analysis but environmental and clinical samples as well.

The growth is attributed to the customers' need for fast and reliable test results as these in-house testing laboratories face mounting pressure to meet new regulatory and customer standards, all the while ensuring quality and the timely release of safe product.

How can Gold Standard Diagnostics help you?

We are a global provider of fast, reliable, and easy to use test kits and instruments in the fields of bioanalytical testing for the food, feed, environmental, biopharma, and clinical industries. The in-house R&D teams have expertise in developing a wide range of innovative methods and applications to meet the testing needs of both research and industry. Our experts are able to customize programs to serve specific needs with competitive pricing and high quality standards.



WHERE WE ARE





ALLERGENS

Food allergens are proteins in food which can trigger allergic, sometimes even life-threatening reactions in sensitized individuals. Even extremely low allergen concentrations can cause allergic symptoms. 90% of all food allergies are caused by the following eight common food categories: milk, eggs, peanuts, fish, shellfish, tree nuts, wheat and soy.

EU Regulation n°1169/2011 requires food manufacturers to label their products with all ingredients potentially capable of causing allergic reactions. The directive also includes a list of food ingredients classified as being possible allergens or intolerants. Many other countries worldwide have similar legislation requiring food manufacturers to label products that potentially contain allergens.

SENSISpec Allergen Detection ELISA Kits

It is critical to ensure that low-level contaminations are not missed during the on-site analysis, resulting in false negative results being released. Reliable and rapid solutions, such as the allergen ELISA kits offered by Gold Standard Diagnostics will improve and simplify in-house testing processes. We provide one of the most comprehensive allergen ELISA test kit portfolios on the market, including the AOAC-certified Gluten ELISA kit SENSISpec INgezim Gluten R5.

Key Benefits of the ELISA Kits

- Quick and sensitive method with low limits of detection
- Quantitative results
- Simple test format
- Comprehensive target portfolio

SENSIStrip Lateral Flow Tests

The lateral flow assays are the perfect tool to control any potential cross-contamination with food allergens, avoiding external analyses and thus considerably reducing the time needed to release a food product batch to the market. With only a few minutes of incubation time, the tests provide a very easy-to-use technique for adequate control at different stages of the food manufacturing process, across food matrices, rinse water and equipment.

Key Benefits of the Lateral Flow Tests

- High sensitivity, low limits of detection
- Semi-quantitative result provided by an evaluation card
- No need of highly qualified end user

RapidScan ST5-W Lateral Flow Assay Reader for Allergen Testing



RapidScan is unique to the market for multiple allergen testing, and compatible with a wide range of allergen lateral flow devices. The reader is easy to set up and operate, generating quantitative results within a few minutes. Data can be stored on the reader then exported through a USB port.

See more information under Instruments, page 86.

SENSISpec Allergen Detection ELISA Kits



Product	LOD (ppb)	Quantitation range	No. of wells	Article No.
SENSISpec ELISA Almond	200	0.4 - 10 ppm	96 48	HU0030001 HU0030025
SENSISpec ELISA Beta-Lactoglobulin	1.5	10 - 400 ppb	96 48	HU0030002 HU0030026
SENSISpec ELISA Casein	40	0.2 - 6 ppm	96 48	HU0030003 HU0030027
SENSISpec ELISA Cashew	200	2 - 60 ppm	96 48	HU0030004 HU0030028
SENSISpec ELISA Coconut	400	2 - 30 ppm	96 48	HU0030005 HU0030029
SENSISpec ELISA Crustaceans (Tropomyosin)	0.9	20 - 400 ppb	96 48	HU0030006 HU0030030
SENSISpec ELISA Egg White	50	0.4 - 10 ppm	96 48	HU0030007 HU0030031
SENSISpec ELISA Fish (Parvalbumin)	1400	4 - 100 ppm	96 48	HU0030008 HU0030032
SENSISpec ELISA Gliadin/Gluten	300	2 - 60 ppm	96 48	HU0030009 HU0030033
SENSISpec ELISA Hazelnut	300	1 - 40 ppm	96 48	HU0030010 HU0030034
SENSISpec ELISA Lupin	200	2 - 30 ppm	96 48	HU0030011 HU0030035
SENSISpec ELISA Lysozyme	2	25 - 250 ppb	96 48	HU0030012 HU0030036
SENSISpec ELISA Macadamia nut	100	1 - 40 ppm	96 48	HU0030013 HU0030037
SENSISpec ELISA Milk	50	0.4 - 10 ppm	96 48	HU0030014 HU0030038
SENSISpec ELISA Molluscs (Tropomyosin)	1.7	10 - 400 ppb	96 48	HU0030015 HU0030039
SENSISpec ELISA Mustard	1000	2 - 60 ppm	96 48	HU0030016 HU0030040
SENSISpec ELISA Ovalbumin	4	25 - 500 ppb	96 48	HU0030017 HU0030041
SENSISpec ELISA Brazil nut	200	1 - 40 ppm	96 48	HU0030018 HU0030042
SENSISpec ELISA Peanut	100	1 - 40 ppm	96 48	HU0030019 HU0030043
SENSISpec ELISA Pecan nut	200	2 - 60 ppm	96 48	HU0030020 HU0030044
SENSISpec ELISA Pistachio	130	1 - 40 ppm	96 48	HU0030021 HU0030045
SENSISpec ELISA Sesame	200	2 - 30 ppm	96 48	HU0030022 HU0030046
SENSISpec ELISA Soy	16	40 - 1000 ppb	96 48	HU0030023 HU0030047
SENSISpec ELISA Total Soy	200	2 - 36 ppb	96 48	HU0030075 HU0030076
SENSISpec ELISA Walnut	350	2 - 60 ppm	96 48	HU0030024 HU0030048

Supplementary Products

Product	Quantity	Article No.
SENSISpec Wash Buffer	60 ml	HU0030074
SENSISpec Extraction Additive	100 g	HU0030100
SENSISpec Ingezim Gluten Extraction Additive	110 ml / 1 L	HU0030105 HU0030103

SENSISpec Gluten Detection ELISA Kits



Product	LOD (ppb)	Quantitation range	No. of wells	Article No.
SENSISpec INgezim Gluten R5 - AOAC certified	3000	3-200 ppm	96	30.GLU.K.2.
SENSISpec INgezim Gluten Quick	3000	3-200 ppm	96	30.GL2.K.2.
SENSISpec INgezim Hydrolyzed Gluten	250	0.25-200 ppm	48	30.GLH.K.2.
SENSISpec INgezim Gluten Semi Q	10000	10-800 ppm	32	30.GSQ.K.2.

SENSISpec Allergen Spike Solutions

Product	For spiking experiments with,...	Concentration	Article No.
SENSISpec Spike Solution Almond	SENSISpec Almond ELISA kit.	1000 ppm	HU0030049
SENSISpec Spike Solution Beta-Lactoglobulin	SENSISpec Beta-Lactoglobulin ELISA kit.	10 ppm	HU0030050
SENSISpec Spike Solution Casein	SENSISpec Casein ELISA kit.	1000 ppm	HU0030051
SENSISpec Spike Solution Cashew	SENSISpec Cashew ELISA kit.	1000 ppm	HU0030052
SENSISpec Spike Solution Coconut	SENSISpec Coconut ELISA kit.	1000 ppm	HU0030054
SENSISpec Spike Solution Tropomyosin (Crustaceans)	SENSISpec Tropomyosin (Crustaceans) ELISA kit.	10 ppm	HU0030055
SENSISpec Spike Solution Egg White	SENSISpec Egg White ELISA kit.	1000 ppm	HU0030056
SENSISpec Spike Solution Fish (Cod)	SENSISpec Fish (Cod) ELISA kit.	1000 ppm	HU0030057
SENSISpec Spike Solution Gliadin	SENSISpec Gliadin ELISA kit.	25000 ppm	HU0030058
SENSISpec Spike Solution Gluten	SENSISpec INgezim GLUTEN R5 ELISA kit.	25 ppm	M.30.GLU. A04003m
SENSISpec Spike Solution Hazelnut	SENSISpec Hazelnut ELISA kit.	1000 ppm	HU0030059
SENSISpec Spike Solution Lupin	SENSISpec Lupin ELISA kit.	1000 ppm	HU0030060
SENSISpec Spike Solution Lysozyme	SENSISpec Lysozyme ELISA kit.	10 ppm	HU0030061
SENSISpec Spike Solution Macadamia nut	SENSISpec Macadamia nut ELISA kit.	1000 ppm	HU0030062
SENSISpec Spike Solution Milk	SENSISpec Milk ELISA kit.	1000 ppm	HU0030063
SENSISpec Spike Solution Tropomyosin (Molluscs)	SENSISpec Tropomyosin (Molluscs) ELISA kit.	10 ppm	HU0030064
SENSISpec Spike Solution Mustard	SENSISpec Mustard ELISA kit.	1000 ppm	HU0030065
SENSISpec Spike Solution Ovalbumin	SENSISpec Ovalbumin ELISA kit.	10 ppm	HU0030066
SENSISpec Spike Solution Brazil nut	SENSISpec Brazil nut ELISA kit.	1000 ppm	HU0030067
SENSISpec Spike Solution Peanut	SENSISpec Peanut ELISA kit.	1000 ppm	HU0030068
SENSISpec Spike Solution Pecan nut	SENSISpec Pecan nut ELISA kit.	1000 ppm	HU0030069
SENSISpec Spike Solution Pistachio	SENSISpec Pistachio ELISA kit.	1000 ppm	HU0030070
SENSISpec Spike Solution Sesame	SENSISpec Sesame ELISA kit.	1000 ppm	HU0030071
SENSISpec Spike Solution Soy Trypsin Inhibitor	SENSISpec Soy Trypsin ELISA kit.	10 ppm	HU0030072
SENSISpec Spike Solution Total Soy	SENSISpec Total Soy ELISA kit.	1000 ppm	HU0030077
SENSISpec Spike Solution Walnut	SENSISpec Walnut ELISA kit.	1000 ppm	HU0030073

Allergen Control Materials **NEW!**

Product	To apply with Allergen ELISA Kits	Article No.
Allergen Control Material – Key Allergens	Beta-Lactoglobulin, Casein, Egg White, Gluten, Milk, Soy, Total Soy	HU0030140
Allergen Control Material – Maritime	Crustaceans, Fish, Molluscs	HU0030141
Allergen Control Material – Nuts	Almond, Brazil nut, Cashew, Coconut, Hazelnut, Macadamia, Peanut, Pecan, Pistachio, Walnut	HU0030142
Allergen Control Material – Seeds	Lupin, Mustard, Sesame	HU0030143

SENSIStrip Lateral Flow Tests **NEW!**



Product	LOD Food matrix	LOD ($\mu\text{g}/\text{cm}^2$) Surface	No. of tests	Article No.
SENSIStrip Almond	2.5 ppm	0.007 $\mu\text{g}/\text{cm}^2$	20	HU0030110
SENSIStrip Beta-Lactoglobulin	100 ppb	0.27 ng/cm^2	20	HU0030111
SENSIStrip Casein	0.5 ppm	0.001 $\mu\text{g}/\text{cm}^2$	20	HU0030112
SENSIStrip Cashew	2.5 ppm	0.007 $\mu\text{g}/\text{cm}^2$	20	HU0030113
SENSIStrip Coconut	5 ppm	0.013 $\mu\text{g}/\text{cm}^2$	20	HU0030114
SENSIStrip Crustaceans (Tropomyosin)	25 ppb	0.2 ng/cm^2	20	HU0030115
SENSIStrip Egg White	0.5 ppm	0.001 $\mu\text{g}/\text{cm}^2$	20	HU0030116
SENSIStrip Fish	6 ppm	16 ng/cm^2	20	HU0030117
SENSIStrip Gluten	4 ppm	1.6 ng/cm^2	20	HU0030118
SENSIStrip Hazelnut	2.5 ppm	0.007 $\mu\text{g}/\text{cm}^2$	20	HU0030119
SENSIStrip Lupin	0.3 ppm	0.001 $\mu\text{g}/\text{cm}^2$	20	HU0030120
SENSIStrip Lysozyme	50 ppb	0.13 ng/cm^2	20	HU0030121
SENSIStrip Macadamia nut	2.5 ppm	0.007 $\mu\text{g}/\text{cm}^2$	20	HU0030122
SENSIStrip Milk Protein	1 ppm	0.003 $\mu\text{g}/\text{cm}^2$	20	HU0030123
SENSIStrip Molluscs (Tropomyosin)	Coming soon		20	HU0030124
SENSIStrip Mustard	2.5 ppm	0.007 $\mu\text{g}/\text{cm}^2$	20	HU0030125
SENSIStrip Ovalbumin	0.1 ppm	0.001 $\mu\text{g}/\text{cm}^2$	20	HU0030126
SENSIStrip Brazil nut	2.5 ppm	0.007 $\mu\text{g}/\text{cm}^2$	20	HU0030127
SENSIStrip Peanut	2.5 ppm	0.007 $\mu\text{g}/\text{cm}^2$	20	HU0030128
SENSIStrip Pecan nut	2.5 ppm	0.007 $\mu\text{g}/\text{cm}^2$	20	HU0030129
SENSIStrip Pistachio	2.5 ppm	0.007 $\mu\text{g}/\text{cm}^2$	20	HU0030130
SENSIStrip Sesame	2.5 ppm	0.007 $\mu\text{g}/\text{cm}^2$	20	HU0030131
SENSIStrip Total Soy	2.5 ppm	0.007 $\mu\text{g}/\text{cm}^2$	20	HU0030132
SENSIStrip Walnut	2.5 ppm	0.007 $\mu\text{g}/\text{cm}^2$	20	HU0030133

RapidScan ST5-W Lateral Flow Assay Reader

Product	Product description	Article No.
RapidScan ST5-W Lateral Flow Assay Reader	Portable instrument specifically designed for field and in-process testing applications requiring qualitative to semi-quantitative test results. Compatible with Gold Standard Diagnostics' allergen, GMO, glyphosate and algal toxins lateral flow tests.	LFRSCAN002
LFD Reader Adapter for allergen strips	Adapter for SENSIStrip allergens LFDs, for use with RapidScan ST5-W LFD Reader	LFA0030001

SENSISwab Swabbing Solution

Product	Product description	No. of swabs	Article No.
SENSISwab kit	10 ml Swabbing solution, 5 Swabs, 5 Sample tubes	5	HU0030101
	10x5: multipack of 10 Swab kits	50	HU0030102





VITAMIN ANALYSIS

Vitamins are essential nutrients for the growth, development, and maintenance of cells, tissues, and organs. Vitamins are classified as either water-soluble or fat-soluble. For humans, there are 13 vitamins: 4 fat-soluble (A, D, E, and K) and 9 water-soluble (8 B vitamins and vitamin C). These nutrients are typically obtained through the consumption of food or dietary supplements, which are subject to vitamin testing in order to meet specific labeling requirements.

We offer ELISA kits and immunoaffinity columns (IAC) for the detection and purification of the following vitamins: Biotin (Vitamin H or Vitamin B7), Folic acid and Vitamin B12.

SENSISpec ELISA Vitamin Kits



Product name	LOD (ppb)	Quantitation range	No. of wells	Article No.
SENSISpec ELISA Vitamin B12	Depends on the sample preparation	0,4-40 ng/ml	96	HU0030400
SENSISpec ELISA Biotin (Vitamin B7)	Depends on the sample preparation	1-25 ng/ml	96	HU0030401
SENSISpec ELISA Folic Acid	Depends on the sample preparation	4-400 ng/ml	96	HU0030402

SENSIColumn Vitamin Immunoaffinity Columns



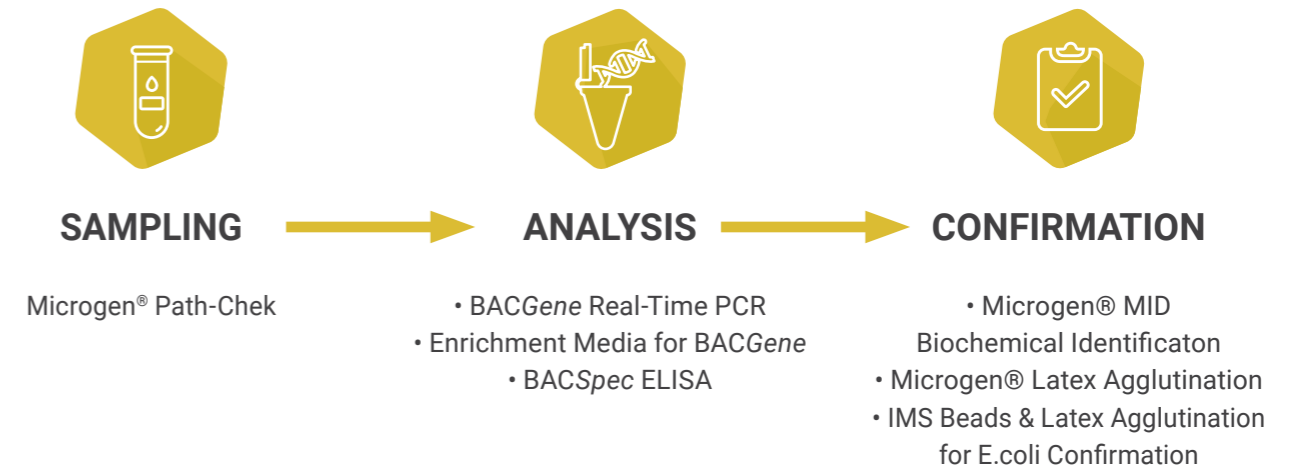
Product name	Product description	Quantity	Article No.
SENSIColumn IAC Biotin*	Determination of Biotin in vitamin tablets, liquid vitamin preparations, cell culture extracts etc.	3 ml x 50 columns	EFSA3175
SENSIColumn IAC Vitamin B12	Determination of Vitamin-B12 (Cyanocobalamin) in vitamin tablets, liquid vitamin preparations, cell culture extracts etc.	3 ml x 50 columns	BTCA3185
SENSIColumn IAC Folic Acid	Determination of folic acid in vitamin tablets, liquid vitamin preparations, cell culture extracts etc.	3 ml x 50 columns	BTFS3195
*FITC-streptavidin-conjugate	Conjugate	1 mg x 25 vials	FITC-SA-Kon



FOOD PATHOGENS

Foodborne illness is often caused by consuming food contaminated with bacteria and/or their toxins, parasites, viruses, chemicals, or other agents. The detection of these harmful food pathogens is essential in order to protect consumers against possible health consequences and to minimize risks and costs for the food industry.

Food Pathogen Kits From Sampling to Confirmation



Our kits for the detection of food pathogens offer laboratories fast and reliable results. With their flexible design, they are well suited for both high and low volume laboratories. In order to guarantee utmost reliability, most of our kits maintain certifications from internationally recognized organizations (AFNOR and/or AOAC) certified on various different food matrices. Please refer to your local sales support for more detailed information.

Key Benefits of Gold Standard Diagnostics Food Pathogen Portfolio

BACGene Real-Time PCR Kits

- Fast analysis time
- Single step enrichment (except chocolate)
- Simple thermal lysis protocol
- Ready-to-use MasterMix
- Internal positive controls
- Open platform: validated and certified for Agilent AriaMx™ and Bio-Rad CFX96™
- Elimination of free DNA by addition of PReEraser BACGene

Microgen® Kits

Microgen® Biochemical Identification

- Cost-effective and accurate
- Software available (MID60)
- No additional equipment needed (only incubator)

Microgen® Latex Agglutination

- One of the most inclusive kits in the market
- Highly sensitive and specific

Microgen® Path-Chek

- Rapid and cost-effective
- Easy to use

Solutions for Sampling

Microgen® Path-Chek Kits **NEW!**

Easy-to-use tests for pathogen detection and food residues from work surfaces and the processing environment. Ensure your regular cleaning processes with this rapid and cost effective solution.

Product	Description	Article No.
Path-Chek® Listeria	Specific media swab-tubes for the detection of <i>Listeria</i> spp. in surfaces, 100 units	PC080
Path-Chek® Salmonella	Specific media swab-tubes for the detection of <i>Salmonella</i> spp. in surfaces, 100 units	PC020
Path-Chek® Coliforms	Specific media swab-tubes for the detection of Coliforms in surfaces, 100 units	PC010
Path-Chek® Swabs	Pre-moistened swab, for use in combination of the Path-Chek® identification media tests, 100 units	PCS100
Path-Chek® Protein	Rapid test for the detection of food residues from environmental surfaces or processing equipment, 50 units, 100 tests	PC006
Path-Chek® Heat Bath	Thermal Bath for laboratory incubations, Temp. range: 5-100°C	PC-HB1

Solutions for Analysis

BACGene Real-Time PCR Kits

Product	Product description	No. of reactions	Article No.
BACGene <i>Salmonella</i> spp.	Real-time PCR for the detection of <i>Salmonella</i> spp. AOAC-PTM (#121501), NF VALIDATION (EGS 38/01-03/15)	96 10 x 96	5123221801 5123221811
BACGene <i>Salmonella</i> Tranoroa	Real-time PCR for the identification of serovar <i>Salmonella enterica</i> subsp. <i>salamae</i> serovar Tranoroa as a process control measure	48	5123222801
BACGene <i>Listeria</i> Multiplex	Real-time PCR for the detection of <i>Listeria monocytogenes</i> and <i>Listeria</i> spp. AOAC-PTM (#061701), NF VALIDATION (EGS 38/05-03/17)	96 10 x 96	5123221901 5123221911
BACGene <i>Listeria</i> spp.	Real-time PCR for the detection of <i>Listeria</i> spp. AOAC-PTM (#061702), NF VALIDATION (EGS 38/02-01/17)	96 10 x 96	5123222101 5123222111
BACGene <i>Listeria monocytogenes</i>	Real-time PCR for the identification of <i>Listeria monocytogenes</i> . AOAC-PTM (#061703), NF VALIDATION (EGS 38/03-01/17)	96 10 x 96	5123222001 5123222011
BACGene <i>E. coli</i> O157:H7	Real-time PCR for the identification of <i>E. coli</i> O157:H7. AOAC-PTM (#22002), NF VALIDATION (EGS 38/06-11/19)	96 10 x 96	5123222701 5123222711
BACGene Mplex STEC Screen	Real-time PCR for the detection of STEC virulence genes <i>stx1</i> , <i>stx2</i> and <i>eae</i> . AOAC-PTM (#22003)	96 10 x 96	5123223001 5123223011
BACGene Mplex STEC SEROtype1	Real-time PCR for the identification of three of the Top6 STEC serogroups. (O111, O103, O26) AOAC-PTM (#22003)	48	5123223101
BACGene Mplex STEC SEROtype2	Real-time PCR for the identification of three out of the Top6 STEC serogroups. (O145, O121, O45) AOAC-PTM (#22003)	48	5123223201

Free DNA Removal



Product	Product description	No. of reactions	Article No.
PREraser	Elimination of free DNA from pathogen enrichments to be used in combination with BACGene kits	2 x 48	5123222301
BACGene		10 x 2 x 48	5123222311

Enrichment Media for BACGene*

Product	Quantity	Article No.
Actero™ <i>Listeria</i> Enrichment Media	500 g bottle	5613902001
Actero™ <i>Listeria</i> Enrichment Media	2 kg	5613902002
Actero™ <i>Listeria</i> Enrichment Media	10 kg	5613902010

*EU only, for more information please refer to www.goldstandarddiagnostics.com

Waterborne Bacterial Pathogens: Real-time PCR Kits



Product	Product description	No. of reactions	Article No.
BACGene <i>Legionella</i> Multiplex	Real-time PCR for the detection of multiplex confirmation and identification of <i>Legionella</i> spp., <i>Legionella pneumophila</i> & <i>Legionella pneumophila</i> subsp. <i>pneumophila</i> SG1 colonies.	96	5123222601

BACGene Accessory Items

Product	Quantity	Article No.
MicroAmp Cap Installing Tool for use with BACGene kits for PCR or for lysis		5613900401
Domed caps for Lysis Plate (DNA extraction), 300 x 8 cap strips	300 x 8 cap strips	5613900301
Lysis plate, for sample preparation, rippable, 1 bag with 5 plates	5 plates	5613901905
Lysis plate, for sample preparation, rippable, 1 box with 25 plates	25 plates	5613901925
Yellow PCR Support Grids, pack with 8 grids	8 grids	5617702208
Blue PCR Support Grids, pack with 8 Grids	8 grids	5617702209
Optical caps, for use with PCR plate, 1 bag with 120 strips	120 strips	5627710010
PCR plate, rippable, 1 bag with 5 plates	5 plates	5617700905
PCR plate, rippable, 1 box with 25 plates	25 plates	5617700925
Blue cooling block 96 well for lysis		5613900501
PCR rack – yellow, 1x96, lid included		5613901301
Lysis rack – blue, 1x96, lid included		5613901401

BACSpec ELISA Kits



Product	Product description	No. of wells	Article No.
BACSpec <i>Salmonella</i> 2	ELISA test kit for qualitative detection of <i>Salmonella</i> spp. AOAC-PTM (#111903), NF VALIDATION (EGS 38/07-12/20)	96 5 x 96	4323410301 4323410305
BACSpec <i>Listeria</i>	ELISA test kit for qualitative detection of <i>Listeria</i> spp. AOAC-PTM (#051703), NF VALIDATION (EGS 38/04-01/17)	96 5 x 96	4323410201 4323410205

Solutions for Confirmation

Microgen® Biochemical Identification Kits **NEW!**

A range of simple, reliable, bacterial identification systems for food industry. Identify the pathogen grown in plates, based on a change of colour of the system.

Product	Description	Article No.
Microgen® <i>Listeria</i> -ID**	Identification system for <i>Listeria</i> spp., 20 tests	MID-67
Microgen® GNA-ID**	Identification system for commonly encountered Enterobacteriaceae, 60 tests	MID-64CE
Microgen® GNB-ID**	Identification system for commonly encountered Enterobacteriaceae and Oxidase positive, 24 tests	MID-65CE
Microgen® <i>Bacillus</i> -ID	Identification system for mesophilic <i>Bacillus</i> species (food poisoning and food spoilage), 20 tests	MID-66CE
Microgen® Strep-ID	Identification system for Streptococci and Enterococci from food and environmental sources, 20 tests	MID-62CE
Microgen® Staph-ID	Identification system for Staphylococci of food and environmental importance, 20 tests	MID-69C

Microgen® Latex Agglutination Kits **NEW!**

Confirmation of pathogenic bacteria in only two minutes. Identification of colonies grown in a selective media with an easy-to-use but highly sensitive and specific solution.

Product	Description	Article No.
Microgen® Legionella Latex**	Rapid latex agglutination test for the confirmation of presumptive <i>Legionella</i> colonies, 50 units	M45CE
Microgen® Campylobacter Latex**	Rapid latex agglutination test for the confirmation of presumptive <i>Campylobacter</i> colonies, 50 units	F46
Microgen® Salmonella Latex**	Rapid latex agglutination test for the confirmation of presumptive <i>Salmonella</i> colonies, 50 units	F42
Microgen® Staphylococcus Latex	Rapid latex agglutination test for the confirmation of presumptive <i>Staphylococcus</i> colonies, 50 units	M43CE

**will be launched soon

0157 and non-0157 STEC Detection

Whether your needs are food safety, compliance, quality assurance, or research, Abraxis® *E. coli* test kits and antibodies provide an extended offering of affordable test solutions for numerous formats such as ELISA, western blot, lateral flow, agglutination, immunoseparation, flow cytometry, and immunofluorescence.

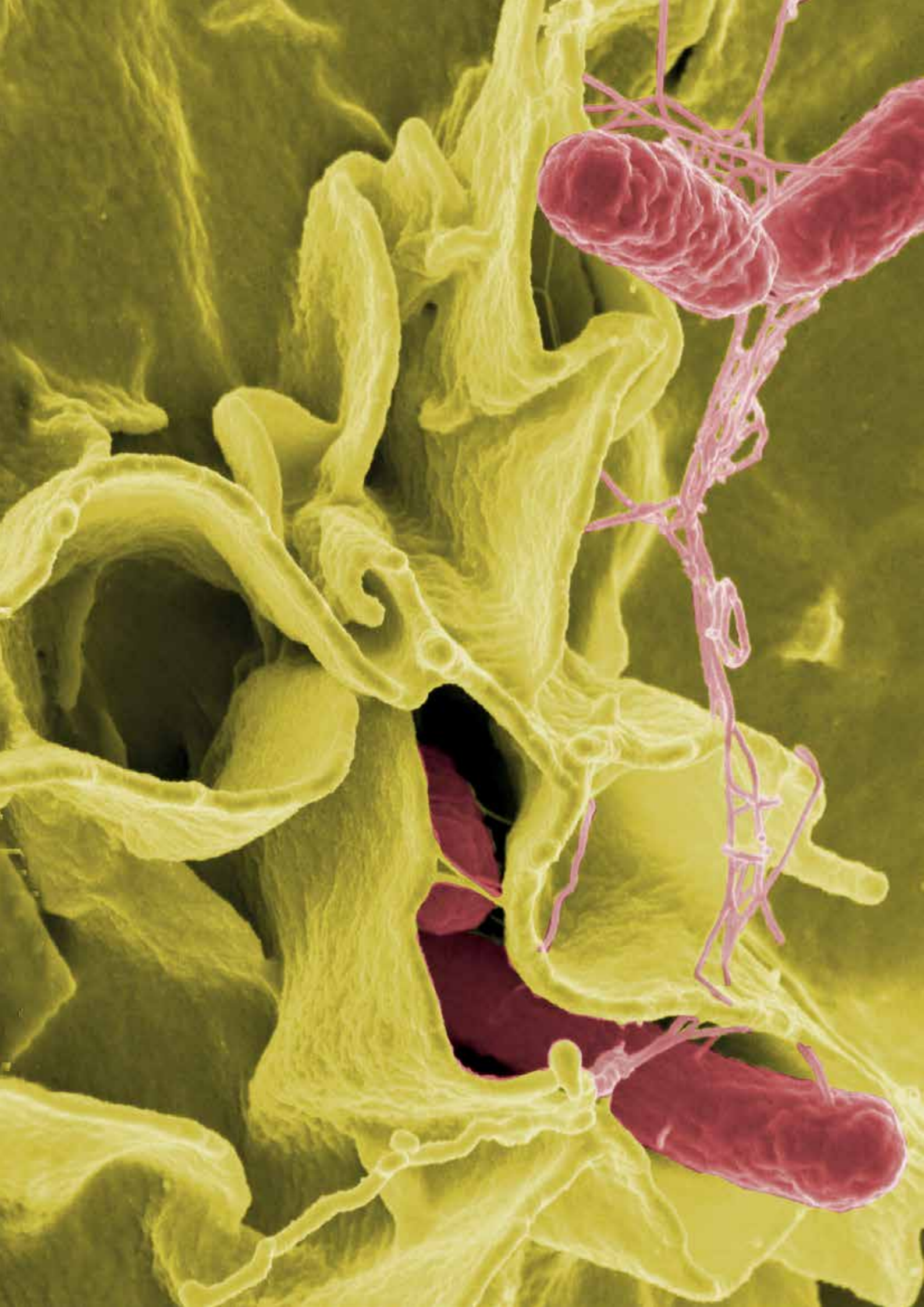
Product	Product Format	Quantity	Article No.
<i>E. coli</i> O26	Latex Agglutination	50 tests	541000
<i>E. coli</i> O45	Latex Agglutination	50 tests	541010
<i>E. coli</i> O103	Latex Agglutination	50 tests	541020
<i>E. coli</i> O104:H4*	Latex Agglutination	50 tests	541060
<i>E. coli</i> O111	Latex Agglutination	50 tests	541030
<i>E. coli</i> O121	Latex Agglutination	50 tests	541040
<i>E. coli</i> O145	Latex Agglutination	50 tests	541050
<i>E. coli</i> O157:H7	Latex Agglutination	50 tests	541070

*Minimum order quantity: 5 kits

IMS Beads for the use with BACGene *E. coli* STEC Solution

Product	Product Format	Quantity	Article No.
<i>E. coli</i> O26	Immunomagnetic Beads	2 ml	5623723601
<i>E. coli</i> O45	Immunomagnetic Beads	2 ml	5623723501
<i>E. coli</i> O103	Immunomagnetic Beads	2 ml	5623723401
<i>E. coli</i> O111	Immunomagnetic Beads	2 ml	5623723301
<i>E. coli</i> O121	Immunomagnetic Beads	2 ml	5623723201
<i>E. coli</i> O145	Immunomagnetic Beads	2 ml	5623723101
<i>E. coli</i> O157:H7	Immunomagnetic Beads	2 ml	5623723001





FOODBORNE VIRUSES

Due to a large number of viral food-related outbreaks, the detection of viruses in food is an important issue in food safety. Oftentimes even low concentrations of a virus can lead to severe health consequences, such as gastrointestinal or liver infections.

VIRSeek Solution: Viral Foodborne Pathogen Detection

The VIRSeek Solution offers an all-inclusive, ISO-15216 compliant workflow from the RNA extraction to the specific detection of norovirus genogroup I, norovirus genogroup II and hepatitis A virus. In addition, the process control murine norovirus (MNV) ensures the monitoring of the RNA isolation procedure.

Each of the VIRSeek Solution kits can be used individually or as part of the comprehensive workflow validated for Agilent AriaMx™ and Bio-Rad CFX96™ (Standard and Deep Well).



VIRSeek Qualitative Real-Time RT-PCR

Product	Product description	No. of reactions	Article No.
VIRSeek Food Norovirus Genogroup I (NoVG I)	Real-time RT-PCR rapid detection of Norovirus Genogroup I (NoVG I) in food samples.	48	5728200201
VIRSeek Food Norovirus Genogroup II (NoVG II)	Real-time RT-PCR rapid detection of Norovirus Genogroup II (NoVG II) in food samples.	48	5728200301
VIRSeek Food Hepatitis A Virus (HAV)	Real-time RT-PCR rapid detection of Hepatitis A virus (HAV) in food samples.	48	5728200101
VIRSeek Food Hepatitis E Virus (HEV)	Real-time RT-PCR kit for rapid detection of Hepatitis E virus (HEV) in food samples.	48	5728200501

VIRSeek RNA Extraction

Product	Product description	No. of reactions	Article No.
VIRSeek RNAExtractor Food	Manual extraction of viral RNA via silica-coated magnetic beads from different food products (incl. soft fruit, leaf, stem and bulb vegetables, bottled water and bivalve molluscan shellfish) in alignment with ISO requirements.	48 x 500 µl or 96 x 250 µl sample input volume	5524401501

VIRSeek Food Process Control

Product	Product description	No. of reactions	Article No.
VIRSeek Murine Norovirus (MNV) Process Control	Real-time RT-PCR kit for rapid detection of Murine Norovirus MNV. Virus/positive control included.	48	5728200401

SARS-COV-2 VIRUS

Monitoring SARS-CoV-2 virus in critical areas is crucial to containing the viral spread. We provide a comprehensive workflow for monitoring SARS-CoV-2 in wastewater and on environmental surfaces: the VIRSeek Wastewater and the VIRSeek Surface Solutions.

VIRSeek Wastewater Solution

Wastewater-based epidemiology has become an important approach to comprehensively monitor dynamics of SARS-CoV-2 infections in highly populated areas. In contrast to other preventive measures, this approach is more cost-effective and non-invasive. The VIRSeek SARS-CoV-2 Mplex I and Mplex II Wastewater real-time RT-PCR kits deliver a solution for SARS-CoV-2 detection in wastewater. These multiplex kits contain primer/probe sets to specifically identify SARS-CoV-2, as well as critical process parameters such as the nucleic acid extraction efficiency, a specific water quality indicator or the impact of matrix inhibition via an internal positive control.

VIRSeek Surface Solution

Although inanimate surfaces may play a minor role in the transmission of SARS-CoV-2 virus, studies have shown, that SARS-CoV-2 virus particles show a prolonged tenacity on surfaces (up to 3 days) that may underline the importance to monitor potential contaminated surfaces. The VIRSeek SARS-CoV-2 Mplex real-time RT-PCR kit was developed in order to specifically detect the two regions N1/N2 on the SARS-CoV-2 N-gene, ensuring reliable results with a two target approach including primer and probes for an extraction control virus added to monitor nucleic acid isolation efficiency.

As part of the whole VIRSeek SARS-CoV-2 Solution, the **VIRSeek RNAExtractor AE1** facilitates in an automated setup the efficient isolation of the viral RNA from wastewater pellets or from surface swab samples.

VIRSeek Surface and Wastewater Solutions



Product name	Product description	Quantity	Article No.
VIRSeek RNAExtractor AE1	RNA isolation kit based on magnetic beads to ensure an automated workflow. Validated for use on KingFisher™ Flex (ThermoFisher) and GSD Auto-Pure96.	96	5524400801
VIRSeek SARS-CoV-2 Mplex*	Real-time RT-PCR for the detection of SARS-CoV-2 (N1/N2) including MS2 phage as an extraction control	96	5728201101
VIRSeek SARS-CoV-2 Ident 2*	Real-time RT-PCR for the detection of SARS-CoV-2 (RdRP)	48	5728200705
VIRSeek SARS-CoV-2 Mplex I Wastewater*	Real-time RT-PCR for the detection of SARS-CoV-2 (N1/N2) including MS2 phage and PMMoV as a water specific quality indicator	48	5728401801
VIRSeek SARS-CoV-2 Mplex II Wastewater*	Real-time RT-PCR for the detection of SARS-CoV-2 (RdRP) including MNV and cross-assembly phage as a water specific quality indicator	48	5728401901

* VIRSeek real-time RT-PCR kits are validated for Agilent AriaMX™ and Bio-Rad CFX96™ (Standard and Deep-Well)



MYCOTOXINS

The term “mycotoxin” refers to a family of toxic secondary metabolites produced by moulds. While hundreds of mycotoxins exist in nature, only a select few are relevant to the agro-food industry: aflatoxins, deoxynivalenol, fumonisins, ochratoxin, patulin, T-2 and HT-2 toxins and zearalenone.

When animals consume feed containing mycotoxins, they not only become ill, but it triggers a domino-effect across the whole livestock industry, whereby contaminated foods of animal origin, such as milk, pose a risk to human health. These compounds have reportedly been associated with various human and animal diseases and are unfortunately a well-established threat to grains and other commodities.

Mycotoxins concern not only grains, coffee, cocoa, wine and spices, but are also prevalent in the dairy industry, particularly aflatoxin M₁. The on-site detection of patulin, a harmful mycotoxin found in fruits and fruit juices is extremely important for juice processors and infant food producers.

Mycotoxin ELISA Kits

We provide different product lines to suit all needs for the reliable and effective mycotoxin analysis in cereals, feed, wine, coffee, spices as well as internationally renowned ELISA kits for aflatoxin M₁ in milk and dairy products. The new rapid patulin test kit offers the quantitative and/or qualitative detection of patulin, a harmful mycotoxin found in fruits and fruit juices.

Screening Kits and Automation Solution

- *BZERO*[®]: ELISA test kits for low analytical volumes, no calibration curve; results in less than 30 min
- *Celer*[®]: fast ELISA test kits for rapid screening
- *I'screen*: accurate, precise, highly sensitive ELISA test kits with low detection limits, including *I'screen* AFLA M1 Milk, granted with AOAC PTM status for use with raw bovine whole milk, skim milk and powdered milk.

Analytes

- Aflatoxin M₁
- Total B and G aflatoxins
- Aflatoxin B₁
- Deoxynivalenol
- Fumonisins
- Ochratoxin A
- Patulin
- T-2 and HT-2 toxins
- Zearalenone

Multiple mycotoxins assays can be also run using our compact, user-friendly automated ELISA robot, the BOLT™.

Immunoaffinity Columns

An extensive portfolio of mycotoxin immunoaffinity columns is available for the majority of regulated mycotoxins. The *SENSIColumn* IACs are simple and reliable sample purification solutions.

- Excellent flow behaviour
- Easy enrichment guaranteed
- Highly specific purification with monoclonal antibodies
- Availability of specific columns and “combi” columns for mycotoxins groups
- Wide range of application for various matrices
- Multi-analyte IACs for LC-MS/MS application
- Fast (15-30 min); long shelf life

B ZERO® Quantitative ELISA Test Kits



Product	Target	Product description	No. of wells	Article No.
B ZERO® AFLA B1	Aflatoxin B1	Methanol-based assay for the specific detection of aflatoxin B1 in corn, sorghum, high moisture corn, silage and mash, feed, hazelnuts, pistachios, peanuts, almonds, raisins, figs, DDGS, cottonseed, soy, soybean meal.	48	HU0040025
B ZERO® AFLA M1 500	Aflatoxin M1	Fast assay for the quantitative detection of aflatoxin M1 in milk according to the Codex Alimentarius Regulation (FDA action limit)	96	HU0040091
B ZERO® AFLA M1	Aflatoxin M1	Sensitive assay for the quantitative research of aflatoxin M1 in milk and dairy products with compliant sensitivity to EU regulation.	192 96 48	HU0040043 HU0040003 HU0040023
B ZERO® DON v2	Deoxynivalenol	Methanol-based assay for the detection of deoxynivalenol in cereals, feed, DDGS with shared sample preparation with other B ZERO assays	48	HU0040028
B ZERO® ZEA	Zearalenone	Methanol-based assay for the detection of zearalenone in cereals, feed and DDGS	48	HU0040027
B ZERO® FUMO	Fumonisin	Methanol-based assay for the detection of fumonisins in maize and feed.	48	HU0040034
B ZERO® OCHRA	Ochratoxin	Methanol-based assay for the detection of ochratoxin in cereals	48	HU0040035
B ZERO® T2	T-2 and HT-2 toxins	Methanol-based assay for the detection of both T-2 and HT-2 metabolite in cereals and feed	48	HU0040036

Celer® Quantitative ELISA Test Kits



Product	Target	Product description	No. of wells	Article No.
Celer® AFLA B1	Aflatoxin B1	Methanol-based assay for the specific detection of aflatoxin B1 in corn, sorghum, high moisture corn, silage and mash, feed, hazelnuts, pistachios, peanuts, almonds, raisins, figs, DDGS, cottonseed, soy, soybean meal.	96 192	HU0040004 HU0040044
Celer® AFLA	Aflatoxins	Methanol-based assay for the detection of total aflatoxins in cereals, corn germ, feed, cottonseed, nuts, dried fruits, paprika, chilli, ginger.	96 192	HU0040011 HU0040051
Celer® AFLA M1 500	Aflatoxin M1	Fast assay for the quantitative detection of aflatoxin M1 in milk according to the Codex Alimentarius Regulation (FDA action limit)	96	HU0040081
Celer® DON v3	Deoxynivalenol	Methanol-based assay for the detection of deoxynivalenol in cereals, feed, DDGS	96 192	HU0040009 HU0040049
Celer® ZEA	Zearalenone	Methanol-based assay for the detection of zearalenone in cereals, feed and DDGS	96 192	HU0040006 HU0040046
Celer® FUMO	Fumonisin	Methanol-based assay for the detection of fumonisins in maize and feed.	96 192	HU0040012 HU0040052
Celer® OCHRA	Ochratoxin	Methanol-based assay for the detection of ochratoxin in cereals	96 192	HU0040013 HU0040063
Celer® T2	T-2 and HT-2 toxins	Methanol-based assay for the detection of both T-2 and HT-2 metabolite in cereals and feed	96 192	HU0040010 HU0040050

I'screen Quantitative ELISA Test Kits



Product	Target	Product description	No. of wells	Article No.
I'screen AFLA M1	Aflatoxin M1	Assay for detecting aflatoxins M1 in milk, yoghurt and cheese. LOD: Raw Milk 0.005 ppb, Milk Powder 0.05 ppb, Cheese 0.037, Firm cheese 0.12, Yoghurt 0.12	96 192	HU0040002 HU0040042
I'screen AFLA M1 milk - AOAC certified	Aflatoxin M1	Assay for detecting aflatoxins M1 in milk. LOD: Raw Milk 0.005 ppb, Milk Powder 0.05 ppb	96 192	HU0040001 HU0040041
I'screen AFLA	Aflatoxin	Assay for detecting aflatoxins in cereals, paprika, chilli, soy, dried fruits and nuts.	96	HU0040019

Water-based Quantitative ELISA Test Kits



Product	Target	Product description	No. of wells	Article No.
H2AFLA	Aflatoxin	Solvent-free assay for the quantitative detection of total aflatoxins in maize, corn germ, wheat, rice, sorghum, barley, peanut, copra, pistachio, walnut, almond, soybean meal and feed.	96	HU0040055
B ZERO H2AFLA	Aflatoxin	Solvent-free assay for the quantitative detection of total aflatoxins, without standard curve, in maize, corn germ, wheat, rice, sorghum, barley, peanut, copra, pistachio, walnut, almond, soybean meal and feed.	48 det.	HU0040064
H2DON	Deoxynivalenol	Solvent-free assay for the quantitative detection of total deoxynivalenol (vomitoxin) in cereals, corn, gluten meal, swine feed, DDGS, soybean meal, malted barley, wheat bran and middlings, and rye.	96	HU0040017
B ZERO H2DON	Deoxynivalenol	Solvent-free assay for the quantitative detection of total deoxynivalenol (vomitoxin) without standard curve in cereals, corn gluten meal, swine feed, DDGS, soybean meal, malted barley, wheat bran and middlings, and rye.	48	HU0040038

ABRAXIS® Patulin Test Kit NEW!



Product	Product description	Article No.
Patulin, ELISA, 96-test	Assay for the quantitative detection of patulin in contaminated samples. Test range: 7.0 to 300 ppb	500106
Patulin Standard & Control Set	Additional product to Patulin ELISA	301102
Patulin Derivatization Set	Additional product to Patulin ELISA	301103

SENSIColumn Immunoaffinity Columns



Product	Product description	Quantity	Article No.
SENSIColumn IAC Aflatoxin total	Immunoaffinity columns that retain total aflatoxin	3 ml x 50 columns	EFAF3105
SENSIColumn IAC Aflatoxin M1	Immunoaffinity columns that retain aflatoxin M1	3 ml x 50 columns	EFAFM3115
SENSIColumn IAC Ochratoxin	Clean-up of commodity extracts of food and feed samples containing ochratoxin A/B	3 ml x 50 columns	EFOT3125
SENSIColumn IAC Ochratoxin SMART	Specially designed low cost immunoaffinity column with reduces loding capacity for ochratoxin purification.	3 ml x 50 columns	EFOTS3125
SENSIColumn IAC Deoxynivalenol	Immunoaffinity columns that retain deoxynivalenol and separate it from the other substances present in the sample.	3 ml x 50 columns	EFDO3135
SENSIColumn IAC Fumonisin	Immunoaffinity columns that retain fumonisins and separate them from the other substances present in the sample.	3 ml x 50 columns	EFFU3145
SENSIColumn IAC Zearalenone	Immunoaffinity columns that retain zearalenone and separate it from the other substances present in the sample.	3 ml x 50 columns	EFZE3155
SENSIColumn IAC Zearalenone SMART	Specially designed low cost immunoaffinity column with reduces loding capacity for ochratoxin purification.	3 ml x 50 columns	EFZES3155
SENSIColumn IAC T2/HT2	Immunoaffinity columns that retain T2 toxin and separate it from the other substances present in the sample.	3 ml x 50 columns	EFTE3165
SENSIColumn IAC Combi Afla+Ochra	Clean-up of commodity extracts of food and feed samples containing aflatoxins and ochratoxins	3 ml x 50 columns	EFCA3215
SENSIColumn IAC Combi Afla+Ochra+Zeara	Clean-up commodity extracts of food and feed samples containing aflatoxins, ochratoxins and zearalenon	3 ml x 50 columns	EFCZ3225
SENSIColumn IAC Combi Deoxinivalenol+Zearalenone	Clean-up of commodity extracts of food and feed samples containing deoxynivalenol and zearalenon	3 ml x 50 columns	EFCD3235
SENSIColumn IAC Combi AOZDFT all in one for LC-MS/MS	Simultaneous extraction of aflatoxins, ochratoxins, zearalenon, deoxynivalenol, fumonisins and T2-Toxin in food and feed stuffs	3 ml x 50 columns	EFCM3265
SENSIColumn IAC Ergot Alkaloids	Clean-up of commodity extracts of food and feed samples containing 12 priority ergot alkaloids	3 ml x 50 columns	EFLS3275

Supplementary Products

Product	Target	Product description	No. of tests / Quantity	Article No.
Mycotoxin Extraction Solution A	Mycotoxins	Solution for the extraction of mycotoxins in cereals and other commodities.	500 ml	HU0040103
Milk diluent		2 bottles containing 12 ml of negative milk (standard 0 milk)	12 ml	HU0040101
Extraction Buffers for Afla M1 in cheese samples	Afla M1 in cheese	1 bottle containing 12 ml of negative milk (0 standard). 2) Extraction buffer: 1 bottle containing 20 ml solution.	12 ml (Milk diluent) 20 ml (Extraction buffer)	HU0040102
Enzyme conjugate for Celer® AFLA B1 and B ZERO® AFLA B1		Enzyme conjugate for Celer® AFLA B1 and B ZERO® AFLA B1	14 ml	HU0040104
Enzyme conjugate for Celer® DON v3 & B ZERO DON v2		Enzyme conjugate for Celer® DON v3 & B ZERO DON v2	14 ml	HU0040105
Enzyme conjugate for Celer® AFLA		Enzyme conjugate for Celer® AFLA	14 ml	HU0040106
Enzyme conjugate for Celer® ZEA & B ZERO ZEA		Enzyme conjugate for Celer® ZEA & B ZERO ZEA	14 ml	HU0040107
Enzyme conjugate for Celer® FUMO & B ZERO FUMO		Enzyme conjugate for Celer® FUMO & B ZERO FUMO	14 ml	HU0040108
Enzyme conjugate for Celer® T2 & B ZERO T2		Enzyme conjugate for Celer® T2 & B ZERO T2	14 ml	HU0040109
Enzyme conjugate for Celer® OCHRA & B ZERO OCHRA		Enzyme conjugate for Celer® OCHRA & B ZERO OCHRA, 14 ml	14 ml	HU0040110
Enzyme conjugate for H2AFLA & B ZERO H2AFLA		Enzyme conjugate for H2AFLA & B ZERO H2AFLA	14 ml	HU0040115
Standard curve set for I'screen AFLA M1 milk		Standard curve set for I'screen AFLA M1 milk	7 x 1,5 ml	HU0040111
Aflatoxin M1 supplementary standards for I'screen AFLA M1 and I'screen AFLA M1 milk		Two extra standards at concentration of 35 and 65 ng/L, both can be purchased in combination to both I'screen AFLA M1 and I'screen AFLA M1 milk ELISA kit.	2 x 1,5 ml	HU0040112





GENETICALLY MODIFIED ORGANISMS (GMO)

Cultivation of genetically modified (GM) crops has increased significantly around the globe over the years. This increase in production has been combined with a complex and ever evolving global regulatory approval process for GM products, therefore requiring the testing of food and agricultural products for genetically modified content in order to facilitate international trade.

GMO analysis can be performed in the field or in a testing laboratory and determination of the appropriate test method is dependent on the nature of the sample, the required level of sensitivity of the assay, and the intended market for the product.

We offer a broad range of GMO testing products that cover both the rapid onsite / field testing as well as comprehensive molecular analysis.

GMO Testing with Real-time PCR

Our GMO testing portfolio is adapted to the volatile and current market situation and the global GMO planting and approval situation of GMOs. Real-time PCR kits for GMO testing are validated for use with various cyclers and are available for screening, identification and quantification.

Real-Time PCR Kits:

- *GMOScreen*: modular toolbox of simplex and multiplex assays for GMO screening
- *GMOIdent*: kits for identification or exclusion of GMOs
- *GMOQuant*: quantitative to quantitate the GMO content

Key Benefits

- Advanced screening strategies for different species
- Broad portfolio of GMO testing kits worldwide
- Regular adaptation of the GMO testing portfolio to current market demands

ELISA Kits and Lateral Flow Devices for GMO Detection

The ELISA test kits provide an accurate and reliable solution to verify the presence or the absence of inserted trait in individual leaf, seed or bulk grain.

Our lateral flow devices enable a rapid on-site GMO detection in cotton, corn, soybean and mustard / canola.

RapidScan ST5-W Lateral Flow Assay Reader for GMO Testing



We offer a quick and easy-to-use protein-based testing method to identify genetically-modified raw ingredients like corn, soybean and canola before they are processed into a final product. The RapidScan reader provides an easy and on-site quantitative interpretation of the results in only 10 minutes.

SpeciesScreen & SpeciesIdent



Kit	Qualitative Assay	Detection of
SpeciesScreen RT IPC Plant	5421229401 (LR/HR)	general plant DNA with internal positive control (IPC)
SpeciesIdent RT IPC Soy	5421232001 (LR)	soy species DNA with internal positive control (IPC)
SpeciesIdent RT IPC Corn/Maize	5421229901 (LR)	corn/maize species DNA with internal positive control (IPC)
SpeciesIdent RT IPC Rapeseed	5421234101 (LR)	rapeseed species DNA with internal positive control (IPC)
SpeciesIdent RT IPC Cotton	5421234001 (LR)	cotton species DNA with internal positive control (IPC)
SpeciesIdent RT IPC Rice	5421234201 (LR/HR)	rice species DNA with internal positive control (IPC)
SpeciesIdent RT IPC CaMV	5421229701 (LR/HR)	Cauliflower Mosaic Virus (CaMV) species DNA with internal positive control (IPC)
SpeciesIdent RT IPC <i>Agrobacterium tumefaciens</i>	5421229801 (LR)	<i>Agrobacterium tumefaciens</i> species DNA with internal positive control (IPC)
SpeciesIdent RT IPC (LR) Linseed	5421234401	Linseed/flax DNA with internal positive control (IPC)
SpeciesIdent RT IPC (LR) Tomato/Potato	5421234301	Tomato and potato DNA with internal positive control (IPC)

GMOScreen Kits



Kit	Qualitative Assay	Detection of
GMOScreen RT IPC 35S/NOS/ABII	5421227101 (LR) 5421227102 (NR)	CaMV 35S promoter, nos terminator and AgroBorder II element with internal positive control (IPC)
GMOScreen RT IPC 35S/NOS/FMV	5421220301 (LR) 5421220302 (NR)	CaMV 35S promoter, nos terminator and FMV promoter with internal positive control (IPC)
GMOScreen RT IPC 35S/NOS	5421220001 (LR)	CaMV 35S promoter and nos terminator with internal positive control (IPC)
GMOScreen RT IPC AgroBorder I/II	5421226201 (LR)	AgroBorder I and AgroBorder II with internal positive control (IPC)
GMOScreen RT IPC 35S Promoter	5421228501 (LR)	Cauliflower mosaic virus 35S promoter with internal positive control (IPC)
GMOScreen RT IPC NOS	5421220201 (LR)	nos terminator with internal positive control (IPC)
GMOScreen RT IPC AgroBorder II	5421228401 (LR)	Agro border II element with internal positive control (IPC)
GMOScreen RT IPC AgroBorder I	5421227501 (LR)	AgroBorder I element (nos promoter) with internal positive control (IPC)
GMOScreen RT IPC FMV	5421220501 (LR/HR)	FMV promoter with internal positive control (IPC)
GMOScreen RT IPC EPSPS modification	5421228801 (LR)	combination of the genetic elements CTP2/EPSPS CP4 gene with internal positive control (IPC)
GMOScreen RT IPC bar	5421227601 (LR)	bar gene with internal positive control (IPC)
GMOScreen RT IPC pat(syn)	5421227701 (LR)	pat(syn) gene with internal positive control (IPC)
GMOScreen RT IPC ocs-terminator	5421228101 (LR)	ocs terminator with internal positive control (IPC)
GMOScreen RT IPC CsVMV	5421245101 (LR)	combination of the genetic elements CsVMV-promoter/pat(syn)-gene with internal positive control (IPC)
GMOScreen RT IPC nptII-gene	5421228601 (LR)	nptII gene with internal positive control (IPC)

Kit	Qualitative Assay	Detection of
GMOScreen RT IPC NOS-NPT	5421226801 (LR/HR+)	combination of the genetic elements nos promoter/nptII-gene with internal positive control (IPC)
GMOScreen RT IPC 35S-NPT	5421226901 (LR/HR+)	combination of the genetic elements 35S promoter/nptII gene with internal positive control (IPC)
GMOScreen RT IPC 35S Terminator	5421227105 (LR/HR)	CaMV35S terminator with internal positive control (IPC)
GMOScreen RT IPC cry1Ab/Ac	5421227901 (LR)	cry1Ab/Ac-gene from <i>B. thuringiensis</i> with internal positive control (IPC)
GMOScreen RT IPC SAMS-ALS	5421226501 (LR)	combination of the genetic elements SAMS-promoter/als-gene with internal positive control (IPC)



GMO Testing Kits for Corn/Maize

SMARTCheck GMO Corn

Use the following two qualitative multiplex assays for a broad coverage of GM corn events: GMOScreen RT 35S/NOS/ABII & GMOIdent RT IPC VCO-01981-5/DAS-40278-9/Ly038 Corn

Qualitative and Quantitative Multiplex Assays

Corresponding simplex assays are available for all qualitative and quantitative multiplex assays.

Multiplex Kit	Qualitative Assay	Quantitative Assay
GMOIdent RT IPC VCO-01981-5/DAS-40278-9/Ly038 Corn	5421230501 (LR) 5421230502 (NR)	
GMOIdent RT IPC 3272/BT176/MON863 Corn	5421243601 (LR) 5421243602 (NR)	
GMOIdent RT IPC TC1507/MON810/NK603 Corn	5421243101 (LR) 5421243102 (NR)	
GMOIdent RT IPC T25/DP-004114-3/DAS-59122-7 Corn	5421244801 (LR) 5421244802 (NR)	
GMOIdent RT IPC MIR162/MIR604/5307 Corn	5421245501 (LR) 5421245502 (NR)	
GMOIdent RT IPC MON87460/MON89034/MON88017 Corn	5421243701 (LR) 5421243702 (NR)	
GMOIdent RT IPC MON87411/MON87403/MON87427 Corn	5421244101 (LR) 5421244102 (NR)	
GMOScreen RT IPC Event GA21/PMI-NOS	5421227103 (LR)	
GMOQuant Duplex IPC 35S/NOS Corn		5125223801 (LR)
GMOQuant Duplex 35S/Event GA21 Corn		5125222801 (LR)
GMOQuant Duplex MIR162/MIR604 Corn		5125222201 (LR)

Qualitative and Quantitative Simplex Assays



GMO Corn/Maize Event	OECD Identifier	Trade Name	Qualitative Assay	Quantitative Assay
CaMV 35S promoter			5421228501 (LR)	5125224001 (LR)
NOS terminator			5421220201 (LR)	5125224101 (LR)
Bt11	SYN-BT011-1	Agrisure™ CB/LL	5421225401 (LR/HR)	5125209901 (HR) 5125206501 (LR)
GA21	MON-00021-9	Roundup Ready™, Agrisure GT™	5421245401 (LR)	5125204501 (HR) 5125204601 (LR)
TC1507	DAS-01507-1	Herculex I™	5421243301 (LR)	5125202301 (HR) 5125209301 (LR)
DAS-59122-7	DAS-59122-7	Herculex RW™	5421245001 (LR)	5125202901 (HR) 5125208201 (LR)
T25	ACS-ZM003-2	LibertyLink™	5421244901 (LR)	
MIR604	SYN-IR604-5	Agrisure RW™	5421245701 (LR)	5125205501 (HR) 5125206401 (LR)
MON810	MON-00810-6	YieldGard™, MaizeGard™	5421241301 (LR)	5125201501 (HR) 5125207801 (LR)
MON88017	MON-88017-3	YieldGard VT RW™	5421244001 (LR)	5125207401 (HR) 5125207301 (LR)
MON89034	MON-89034-3	YieldGard VT Pro™	5421243801 (LR)	5125206901 (HR) 5125206701 (LR)
NK603	MON-00603-6	Roundup Ready 2™	5421243201 (LR)	5125204301 (HR) 5125204401 (LR)
MIR162	SYN-IR162-4	Agrisure Viptera™	5421245601 (LR)	5125221501 (HR) 5125209701 (LR)
DAS-40278-9	DAS-40278-9	Enlist™	5421226001 (LR)	5125222701 (LR)
MON87460	MON-87460-4	DroughtGard™	5421243901 (LR)	5125222901 (LR)
MON87427	MON-87427-7	Roundup Ready™	5421244401 (LR)	5125222501 (LR)
5307	SYN-05307-1	Agrisure Duracade™	5421230801 (LR/HR)	5125222401 (LR)
MON87403	MON-87403-1		5421244301 (LR)	
DP-004114-3	DP-004114-3	Qrome™	5421242201 (LR/HR)	5125223701 (LR/HR)
MON87411	MON-87411-9		5421244201 (LR)	
MZHG0JG	SYN-000JG-2		5421245301 (LR)	
3272	SYN-E3272-5	Enogen™	5421243501 (LR)	5125221301 (HR) 5125207601 (LR)
DP-098140-6	DP-098140-6	Optimum™ GAT™		5125221401
Bt176	SYN-EV176-9	KnockOut™, NatureGard™	5421240301 (LR/HR+)	5125209801 (HR) 5125209401 (LR)
MON863	MON-00863-5	YieldGard Rootworm™, MaxGard™	5421243401 (LR)	5125208101 (HR) 5125208001 (LR)
VCO-01981-5	VCO-01981-5		5421230201 (LR)	
LY038	REN-00038-3	Mavera™	5421241201 (LR)	
T14	ACS-ZM002-1	LibertyLink™	5421230401 (LR)	



GMO Testing Kits for Soybean

SMARTCheck GMO Soy

Use the following two qualitative multiplex assays for a broad coverage of GM soybean events: GMOScreen RT 35S/NOS/ABII & GMOScreen RT IPC Soy CsVMV/CV127/event DP305423-1

Qualitative and Quantitative Multiplex Assays

Corresponding simplex assays are available for all qualitative and quantitative multiplex assays.

Multiplex Kit	Qualitative Assay	Quantitative Assay
GMOScreen RT IPC Soy CsVMV/CV127/event DP305423-1	5421227203 (LR) 5421227104 (NR)	
GMIdent RT IPC DAS-44406-6/DAS-81419-2/DAS-68416-4 Soy	5421246001 (LR) 5421246002 (NR)	
GMIdent RT IPC MON87708/MON87701/MON87705 Soy	5421244501 (LR) 5421244502 (NR)	
GMOScreen RT IPC CV127/SAMS-ALS	5421225601 (LR)	
GMOQuant Duplex 35S/AgroBorder II Soy		5125222301 (LR)
GMOQuant Duplex 35S/MON89788 Soy		5125210001 (LR)
GMOQuant Duplex IPC GTS 40-3-2 modification/Event MON89788 Soy		5125223901 (LR)

Qualitative and Quantitative Simplex Assays



GMO Soy Event	OECD Identifier	Trade Name	Qualitative Assay	Quantitative Assay
CaMV 35S promoter			5421228501 (LR)	5125207201 (LR)
NOS terminator			5421220201 (LR)	
AgroBorder II element			5421228401 (LR)	5125222101 (HR) 5125222001 (LR)A
CsVMV modification			5421245101 (LR)	5125225101 (LR)
GTS 40-3-2	MON-04032-6	Roundup Ready™	5421242601	5125224201 (LR)
MON89788	MON-89788-1	Genuity Roundup Ready 2 Yield™	5421241101 (LR)	5125224301 (LR)
MON87701	MON-87701-2		5421241701 (LR)	5125220301
MON87708	MON-87708-9	Genuity Roundup Ready 2 Xtend™	5421240401 (LR)	5125223301 (LR)
MON87705	MON-87705-6	Vistive Gold™	5421244701 (LR)	5125221601
A2704-12	ACS-GM005-3	LibertyLink™	5421226101 (LR)	5125206301 (HR) 5125206801 (LR)
A5547-127	ACS-GM006-4	LibertyLink™	5421223701 (LR/HR+)	5125220601
CV127	BPS-CV127-9	Cultivance™	5421240501 (LR)	5125220701
FG72	MST-FG072-2	Balance™ GT	5421240701 (LR)	5125224901 (LR)
MON87769	MON-87769-7	Soymega™	5421230701 (LR)	5125222601 (LR)
DP-305423-1	DP-305423-1	Plenish™	5421240601 (LR)	5125207501
DP-356043-5	DP-356043-5	Optimum™ GAT™	5421242301	5125220201
DAS-68416-4	DAS-68416-4	Enlist™	5421240101 (LR)	5125223201 (LR)
DAS-44406-6	DAS-44406-6	Enlist E3™	5421245801 (LR)	
MON87751	MON-87751-7		5421241801	5125223501 (LR/HR)
DAS-81419-2	DAS-81419-2	Conkesta™	5421245901 (LR)	
SYHT0H2	SYN-000H2-5		5421246401 (LR)	



GMO Testing Kits for Canola/Rapeseed

SMARTCheck GMO Canola

Use the following two qualitative multiplex assays for a broad coverage of GM canola events: GMOScreen RT IPC EPSPS/NOS/pat(syn) & GMOScreen RT IPC ocs-terminator/Laurical™/oxy-235 Canola

Qualitative and Quantitative Multiplex Assays

Corresponding simplex assays are available for all qualitative and quantitative multiplex assays.

Multiplex Kit	Qualitative Assay	Quantitative Assay
GMOScreen RT IPC EPSPS/NOS/pat(syn)	5421228701 (LR) 5421228702 (NR)	
GMOScreen RT IPC ocs-terminator/Laurical™/oxy-235 Canola	5421228201 (LR) 5421228301 (NR)	
GMOIdent RT IPC RT73/T45/MON88302 Canola	5421242701 (LR) 5421242702 (NR)	
GMOQuant Duplex IPC RT73/MON88302 Canola		5125224501 (LR)

Qualitative and Quantitative Simplex Assays



GMO Corn Event	OECD Identifier	Trade Name	Qualitative Assay	Quantitative Assay
RT73 (GT73)	MON-00073-7	Roundup Ready™	5421242801 (LR)	5125224601 (LR)
MS8	ACS-BN005-8	SeedLink™	5421224201	5125209001
RF3	ACS-BN003-6	SeedLink™	5421224301	5125209101
T45	ACS-BN008-2	LibertyLink™	5421223501 (LR)	5125208401
MON88302	MON-88302-9	TruFlex™	5421242901 (LR)	5125224401 (LR)
DP-073496-4	DP-073496-4	Optimum™ Gly	5421243001 (LR)	
23-198	CGN-89111-8	Laurical™	5421242401 (LR)	
Westar Oxy-235	ACS-BN011-5	Navigator™, Compass™	5421242501 (LR)	



GMO Testing Kits for Cotton

Qualitative and Quantitative Simplex Assays



GMO Cotton Event	OECD Identifier	Trade Name	Qualitative Assay	Quantitative Assay
MON15985	MON-15985-7	Bollgard II™	5421224001 (LR/HR+)	
LLCotton25	ACS-GH001-3	LibertyLink™	5421224101 (LR/HR+)	
MON1445	MON-01445-2	Roundup Ready™	5421222901	
GHB614	BCS-GH002-5	GlyToI™	5421241001 (LR)	
3006-210-23	DAS-21023-5	WideStrike™	5421241601 (LR)	5125220901 (LR)
281-24-236	DAS-24236-5	WideStrike™	5421241501 (LR)	5125221101 (LR)
MON88913	MON-88913-8	Roundup Ready Flex™	5421223401 (LR/HR+)	

GMO Testing Kits for Other Species

Qualitative and Quantitative Simplex Assays



GMO Event	OECD Identifier	Trade Name	Qualitative Assay
LL62 Rice	ACS-OS002-5	LibertyLink™	5421222001
LL601 Rice	BCS-OS003-7		5421222101
TT51-1 Rice	HZU-HH001-9	Bt Shanyou 63, Huahui 1	5421246201 (LR)
H7-1 Sugar Beet	KM-000H71-4	Roundup Ready™	5421246101 (LR)
EO-1a Salmon		AquAdvantage™	5421230601
FP967	CDC-FL001-2	CDC Triffid	5421246301



GMO ELISA Testing Kits

Qualitative ELISA Kits



Product name	Product Description	Nr of wells	Article No.
Cry1Ac/Ab ELISA Kit	Cotton/Corn/Soybean Individual Leaf, Seed	96	AID 007
Cry2A ELISA Kit	Cotton/Corn/Soybean Individual Leaf, Seed	96	AID 008
CP4EPSPS (RR) ELISA Kit	Cotton/Corn/Soybean/Canola Individual Leaf, Seed	96	AID 011
Cry1Ac/Cry2A Combined ELISA Kit	Cotton Individual Leaf, Seed	96	AID 017
PAT/bar ELISA Kit	Cotton/Corn/Canola/Soybean Individual Leaf, Seed	96	AID 018
Vip3A ELISA Kit	Cotton/Corn Individual Leaf, Seed	96	AID 023
PAT/pat ELISA Kit	Cotton/Corn/Canola/Soybean Individual Leaf, Seed	96	AID 027
Cry1F ELISA Kit	Cotton/Corn Individual Leaf, Seed	96	AID 004
Modified Cry3A ELISA Kit	Corn Individual Leaf, Seed	96	AID 052
Cry3Bb ELISA Kit	Corn Individual Leaf, Seed	96	AID 053
Chinese Fusion ELISA Kit	Cotton Individual Leaf, Seed	96	AID 006
Cry1F QT ELISA Kit	Cotton/Corn Individual Leaf, Seed	96	AID 101F
Cry1EC ELISA Kit	Cotton/Castor Individual Leaf, Seed	96	AID 020
Barnase ELISA Kit	Pollen from Canola/Mustard	96	AID 019
Barstar ELISA Kit	Pollen from Canola/Mustard	96	AID 016

GMO Lateral Flow Devices

Qualitative Bulk Grain Lateral Flow Kits



Product name	Product Description	Nr of strips	Article No.
CP4EPSPS (RR) LFS Kit	Soybean/Canola Bulk Seeds (0.1%)	100	AID 040
CP4EPSPS (RR) LFS Kit	Cotton/Corn Bulk Seeds (0.1%)	100	AID 043
Cry1Ac/Ab LFS Kit	Cotton/Corn Bulk Seeds (Sensitivity: 0.25% for Cotton & 0.8% for Corn)	100	AID 044
Cry2A LFS Kit	Cotton/Corn Bulk Seeds (Sensitivity: 0.25% for Cotton & 1% for Corn)	100	AID 046
Vip3A LFS Kit	Cotton/Corn Bulk Grain (0.25%)	100	AID 048
Cry1F LFS Kit	Cotton/Corn Bulk Grain (0.5%)	100	AID 050
eCry3A and Cry3Bb Combined LFS Kit	Corn Bulk Grain (0.5%)	100	AID 058
Cry3Bb LFS Kit	Corn Bulk Grain (0.2%)	100	AID 060

Qualitative Individual Leaf/Seed Lateral Flow Kits



Product name	Product Description	Nr of strips	Article No.
Cry1Ac/Ab LFS Kit	Cotton/Corn Individual Leaf, Seed	100	AID 032
Cry1F LFS Kit	Cotton/Corn Individual Leaf, Seed	100	AID 033
Cry2A LFS Kit	Cotton/Corn Individual Leaf, Seed	100	AID 026
Vip3A LFS Kit	Cotton/Corn Individual Leaf, Seed	100	AID 031
CP4EPSPS (RR) LFS Kit	Cotton/Corn/Soybean/Canola Individual Leaf, Seed	100	AID 025
PAT/Pat LFS Kit	Cotton/Corn/Canola/Soybean Individual Leaf, Seed	100	AID 029
Cry1Ac/Cry2A LFS Kit	Cotton Individual Leaf, Seed	100	AID 038

Product name	Product Description	Nr of strips	Article No.
Cry1Ab/CP4EPSPS (RR) LFS Kit	Corn Individual Leaf, Seed	100	AID 036
Cry1Ac/Cry2A/CP4EPSPS (RR) LFS Kit	Cotton Individual Leaf, Seed	100	AID 035
PAT/bar LFS Kit	Canola Individual Leaf, Seed	100	AID 049
Modified Cry3A LFS Kit	Corn Individual Leaf, Seed	100	AID 057
Cry3Bb LFS Kit	Corn Individual Leaf, Seed	100	AID 054
Micro Pestles	Micro Pestles for Tissue Homogenizer for LFS Kit	100 Pestles	AID MP01

Additional GMO ELISA Kits and Proteins

Product	Product Format	Quantity	Article No.
ABRAXIS® Bt Cry1Ab/Cry1Ac*	ELISA Plate	96 tests	510001
ABRAXIS® CP4 EPSPS*	ELISA Plate	96 tests	510101
Cry1Ab	Protein	10 µg	300003
Cry1Ac	Protein	10 µg	250020
Cry2A	Protein	10 µg	250040
Cry3B	Protein	10 µg	250050
Cry9C	Protein	10 µg	250060

* Minimum order quantity: 5 kits

Quantitative Bulk Grain Lateral Flow Kits

GMO Lateral Flow Strips for RapidScan ST5-W Lateral Flow Reader

Product name	Product description	Article No.
CP4 EPSPS (RR) Quantitative LFS Kit – Soybean & Canola	LFS for CP4EPSPS Testing in Bulk Grain Soybean & Canola using RapidScan (Sensitivity: 0.05% for Soybean & 0.1% for Canola), 100 strips	EAID 101
CP4 EPSPS (RR) Quantitative LFS Kit – Corn	LFS for CP4EPSPS Testing in Bulk Grain Corn using RapidScan (Sensitivity: 0.1% for Corn), 100 strips	EAID 102
Vip3A Quantitative LFS Kit – Corn	LFS for Vip3A Testing in Bulk Grain Corn using RapidScan (Sensitivity: 0.2% for Corn), 100 strips	EAID 103
Cry3Bb Quantitative LFS Kit – Corn	LFS for Cry3Bb Testing in Bulk Grain Corn using RapidScan (Sensitivity: 0.5% for Corn), 100 strips	EAID 104

RapidScan ST5-W Lateral Flow Assay Reader

Product name	Product description	Article No.
RapidScan ST5-W Lateral Flow Assay Reader	Portable instrument specifically designed for field and in-process testing applications requiring qualitative to semi-quantitative test results. Compatible with Gold Standard Diagnostics' GMO, allergen, glyphosate and algal toxins lateral flow tests.	LFRSCAN002
LFD Reader Adapter for GMO strips	Adapter for GMO LFDs, for use with RapidScan ST5-W LFD Reader	LFA0060001



NUCLEIC ACID ISOLATION

Food, feed and seed laboratories are often faced with a number of challenges during the isolation of DNA. The high variability of samples types as well as inhibitory substance and low DNA yield can have detrimental impacts on the subsequent analytical methods, such as PCR testing. High-quality DNA is the prerequisite for the success of these methods, therefore it is crucial to select the right DNA method optimised for your sample type. Our kit portfolio offers DNA methods for a wide range of sample types.

Automated DNA Isolation With iMAGo Food **NEW!**

Meeting the needs of a high-throughput laboratory, iMAGo Food offers an automated, magnetic-bead based technology to efficiently isolate genomic DNA from a high variety of food and feed sample matrices.

Key Benefits

- Recovery up to 180 µg of DNA when using raw matrices such as corn kernels (DNA yield strongly depends on matrix type and grinding performance)
- For use on open platforms such as KingFisher Flex System and Allsheng Auto-Pure 96
- Highest matrix variability being validated with one workflow
- Fully validated workflow with subsequent GMO Real-Time PCR systems
- Based on solvent-free chemistry

DNA Isolation Offering



Product name	Product description	Quantity	Article No.
iMAGo Food	Test kit for automated, magnetic-bead based isolation of high-quality DNA from food and feed samples. Designed for use on open automated platforms like KingFisher™ Flex System and Allsheng Auto-Pure 96.	96	5524421001
GENESpin	Silica-based spin-columns for the isolation of genomic DNA for food and feed samples. All items/reagents included.	50	5224400605
DNA Cleaning Columns	Spin-columns for additional DNA purification step. All items/reagents included.	100	5224700310
DNAExtractor	Buffer-based extraction solution to efficiently isolate genomic DNA from a variety of sample types.	50	5224700610
DNAExtractor Fat	Buffer-based extraction solution to efficiently isolate genomic DNA from oils, fats, and emulsifiers.	50	5224700710
DNAExtractor Gelatin	Buffer-based extraction solution to efficiently isolate genomic DNA from gelatin.	50	5224701001
DNAExtractor Honey	Buffer-based extraction solution to efficiently isolate genomic DNA from honey.	50	224700910

Note: if larger packaging formats are requested, please refer to your local sales support



VETERINARY DRUG RESIDUES AND ADDITIVES

Veterinary drugs are usually administered within animal husbandry to cure and to prevent diseases, to increase weight gain and to tranquilize animals during transportation. These drugs consist of a complex group of hundreds of substances belonging to different chemical classes and therapeutic areas i.e., antibiotics, antiparasitics, nonsteroidal anti-inflammatory drugs, growth promoters such as steroid hormones and betaagonists, and many others.

The widespread use of veterinary drugs in livestock is of great concern as their presence in edible products could induce severe consequences on human health: i.e., hepato- and nefro-toxicity, side effects, allergic reactions, sterility, cancer, and last but not the least, drug contaminated food can favor anti-microbial resistance.

ELISA Kits to Detect Veterinary Drug Residues and Feed Additives

We provide broad support for the needs of the meat, dairy, aquaculture, animal husbandry, veterinary, and other industries. Products include ELISA for quantitative analysis and lateral flow tests for rapid analysis of substances in matrices such as meat, egg, milk, honey, fish, crustaceans, molluscs, and animal feed. Analytes include:

Antimicrobials

- Sulfonamides (1, 2)
- Tetracyclines
- Quinolones (1, 2)
- Streptomycin (1)
- Tylosin
- Chloramphenicol
- Nitrofurantoin metabolites (AOZ, AMOZ, SEM, AHD)

Penicillins

- Penicillin
- Ivermectin
- ABRAXIS® Salinomycin
- ABRAXIS® Monensin

Beta-agonists

- Clenbuterol

Steroids and RALs

- Zeranol
- Trenbolone
- 17-beta-estradiol

Others

- Corticosteroids (1, 2)

(1) *B ZERO*® format available: virtual master curve calibration

(2) Broad range kit: this kit can recognize a wide number of drugs belonging to the same substance

Key Benefits of the VDR ELISA Kits

- *B ZERO*®: ELISA test kits with virtual calibration curve - the most cost effective offer available on the market
- *l'screen*: ELISA test kits for the detection of low levels of drug residues as well as the presence of a number of structure-related contaminants

I'screen Quantitative ELISA Test Kits



Product	Target	Product description	No. of tests / Quantity	Article No.
I'screen SULFA	Sulfonamides family	Sensitive broad-range assay for the quantitative analysis of all the principal sulfonamides used in zootechniques.	96	HU0050003
I'screen STREPTO	Streptomycin	Sensitive assay for the quantitative detection of streptomycin and dihydrostreptomycin	96	HU0050013
Milk Standard for I'screen Strepto		1.5ml of Milk Standard	1.5 ml	HU0050019
I'screen TYLOSIN	Tylosin	Sensitive assay for the quantitative analysis of tylosin A	96	HU0050020
I'screen CAP	Chloramphenicol	Sensitive assay for the quantitative detection of chloramphenicol in different matrices	96	HU0050001
I'screen CAP v2	Chloramphenicol	Sensitive assay for the quantitative detection of chloramphenicol in seafood and other matrices	96	HU0050002
I'screen QUINO	Fluoroquinolones	Sensitive broad-range assay for the quantitative research of all the regulated fluoroquinolones used in zootechniques.	96	HU0050004
I'screen TRENB		Sensitive assay for the quantitative detection of trenbolone	96	HU0050022
I'screen ZERANOL	Zeranol	Sensitive assay for the quantitative detection of zeranol	96	HU0050023
I'screen CORTICO	Corticosteroids	Broad-range assay for the research of corticosteroids	96	HU0050007
β-agonists (clenbuterol) ELISA kit	Clenbuterol	Sensitive assay for the quantitative detection of clenbuterol	96	HU0050018

I'screen Rapid ELISA Test Kits



Product	Target	Product description	No. of tests / Quantity	Article No.
I'screen AOZ Rapid	AOZ	Test kit for the rapid quantitative detection of furazolidone metabolite in seafood, bovine and swine muscle, eggs and honey.	96	HU0050034
I'screen AMOZ Rapid	AMOZ	Test kit for the rapid quantitative detection of furaltadone metabolite in seafood, bovine and swine muscle, eggs and honey.	96	HU0050035
I'screen SEM Rapid	SEM	Test kit for the rapid quantitative detection of nitrofurazone metabolite in seafood, bovine and swine muscle and honey.	96	HU0050036
I'screen AHD Rapid	AHD	Test kit for the rapid quantitative detection of nitrofurantoin metabolite in seafood, bovine and swine muscle and honey.	96	HU0050037

B ZERO® Quantitative ELISA Test Kit



Product	Product description	No. of tests	Article No.
B ZERO® SULFA	Quantitative detection of Sulfonamides	48	HU0050006
B ZERO® STREPTO	Quantitative detection of Streptomycin	48	HU0050024
B ZERO® CORTICO	Quantitative detection of Corticosteroids	96	HU0050008
B ZERO® QUINO	Quantitative detection of Quinolones	96	HU0050005

Other Kits to Detect Veterinary Drug Residues and Additives



Product	Product Format	Quantity	Article No.
SENSISpec Tetracycline	Plate	96 tests	HU0050014
SENSISpec Penicillin	Plate	96 tests	HU0050017
SENSISpec Estradiol	Plate	96 tests	HU0030300
SENSISpec Progesterone	Plate	96 tests	HU0030301
ABRAXIS® Enrofloxacin, ELISA, 96-test*	Plate	96 tests	522511
Ivermectin/Abamectin, ELISA, 96-test*	Plate	96 tests	5142B
ABRAXIS® Melamine, ELISA, 96-test	Plate	96 tests	50005B
ABRAXIS® Monensin, ELISA, 96-test*	Plate	96 tests	515785
ABRAXIS® Progesterone, Bovine Pregnancy (Milk/Serum/Plasma), ELISA, 96-test	Plate	96 tests	5081M
ABRAXIS® Salinomycin/Narasin, ELISA, 96-test	Plate	96 tests	515795
ABRAXIS® Sulfamethoxazole (SMX), ELISA, 96-test*	Plate	96 tests	522003

* Minimum order quantity: 5 kits

BIOGENIC AMINE

Histamine is a biogenic amine, which is formed by enzymatical decarboxylation from the amino acid histidine. It can enter the human body via nutrition and can thus cause pseudo-allergic food intolerances.

Food intolerances, which are caused by increased histamine concentrations, are clinically characterized by rash, diarrhoea, vomiting, nausea, itching, headache and asthma. The extent of the reaction is dependent on the ingested amount of histamine.

Separated from histamine intolerances toxic reactions exist, which are caused by very high histamine concentrations. Toxic histamine concentrations, which can cause the so-called scombroid reaction, appear after bacterial degradation of protein-rich food, especially fish.

Histamine is found above all in cheese, fish, spinach, smoked products and red wine. Our kits provide a quick, economical and sensitive method to detect histamine in wine, fish or cheese.

Histamine Kits



Product	Product Format	Quantity	Article No.
ABRAXIS® Histamine, ELISA, 96-test*	Plate	96 tests	515168
SENSISpec ELISA Histamine	Plate	96 tests	HU0030200
SENSISpec ELISA Histamine Rapid	Plate	96 tests	HU0030201

* Minimum order quantity: 5 kits



ANIMAL SPECIES

Animal species identification in food and feed products has grown in importance due to public health, economic and legal concerns. Even religious and ethical criteria can be at risk in the case of food adulteration. To verify the authenticity of products, food testing laboratories need reliable methods, which can answer these questions.

The application of specific methods can determine if lower-priced substitutes replace premium products such as chicken instead of turkey or cow milk instead of goat milk. Confidence that vegetarian or vegan food contains no trace of animal products is essential to brand integrity.

DNAnimal Kits

The DNAnimal product line offers a broad spectrum of sensitive real-time PCR kits for the most domestic animal species as well as specific applications like halal testing.

Most DNAnimal kits detect the species or taxonomic group in question with a sensitivity of 0.01%. Some specific kits (e.g. the DNAnimal Ident Pig HS) detecting mitochondrial targets are even more sensitive.

DNAnimal Screen

- Kits cover different taxonomic groups
- Application for various food and feed relevant testing strategies, i.e. to test vegan or vegetarian food

DNAnimal Ident

- For identifying or excluding individual animal species
- A broad range of control DNAs at different concentrations are available

Key Benefits

- Kits are validated on a number of different thermocyclers
- Contain an IPC (internal positive control) to exclude false-negative results
- Have undergone extensive specificity and sensitivity validation
- Produce robust and reliable results
- DNA extraction kits available for different matrices

Additional Products and Services

- DNA extraction kits for different matrices, even for highly processed matrices such as pure gelatin
- Animal species DNA as positive control DNA and meat testing standards with defined percentages

DNAAnimal Kits



Product	Product description	No. of reactions	Article No.
DNAAnimal Screen Halal IPC (LR)	Real-time PCR kit for simultaneous RT-PCR detection of pork and horse/donkey DNA. 96 multiplex real-time PCR reactions with IPC, all reagents and controls included, for up to 46 samples.	96	5422221210
DNAAnimal Screen Mammal & Bird IPC	Real-time PCR kit for detection of mammalian and avian DNA. 96 real-time PCR rxns with IPC, all reagents and controls included, for up to 46 samples.	96	5422212110
DNAAnimal Screen Ruminant IPC	Real-time PCR kit for detection of ruminant DNA. 96 real-time PCR rxns with IPC, all reagents and controls included, for up to 46 samples. Validated for ABI7900, ABI7500/Fast, MX3005P/ MX3000P, CFX96 and LC480.	96	5422221110
DNAAnimal Screen Fish IPC	Real-time PCR kit for detection of fish DNA. 96 real-time PCR rxns with IPC, all reagents and controls included, for up to 46 samples.	96	5422211310
DNAAnimal Screen Bird IPC	Real-time PCR kit for detection of avian DNA. 96 real-time PCR rxns with IPC, all reagents and controls included, for up to 46 samples.	96	5422211410
DNAAnimal Ident Beef IPC	Real-time PCR kit for identification of bovine DNA (detects besides <i>Bos taurus</i> also bison and several other <i>Bos</i> species). 96 real-time PCR rxns with IPC, all reagents and controls included, for up to 46 samples.	96	5422220610
DNAAnimal Ident Pork IPC	Real-time PCR kit for identification of porcine DNA (both, <i>Sus scrofa domestica</i> and <i>scrofa</i>). 96 real-time PCR rxns with IPC, all reagents and controls included, for up to 46 samples.	96	5422211910
DNAAnimal Ident Pig HS IPC (LR) High Sensitivity	Real-time PCR kit for identification of porcine DNA (both, <i>Sus scrofa domestica</i> and <i>scrofa</i>) in low DNA samples (e.g. gelatin). 96 real-time PCR rxns with IPC, all reagents and controls included, for up to 46 samples.	96	5422211810
DNAAnimal Ident Meat IPC	Real-time PCR kit for identification of bovine and porcine DNA. 2x48 real-time PCR rxns with IPC, all reagents and positive control DNA included.	2 x 48	5422212010
DNAAnimal Ident Chicken IPC (LR)	Real-time PCR kit for identification of chicken (<i>Gallus gallus</i>) DNA. 96 real-time PCR rxns with IPC, all reagents and controls included, for up to 46 samples.	96	5422221010
DNAAnimal Ident Duck IPC	Real-time PCR kit for identification of duck (<i>Anas platyrhynchos</i> and <i>Cairina moschata</i>) DNA. 96 real-time PCR rxns with IPC, all reagents and controls included, for up to 46 samples.	96	5422220410
DNAAnimal Ident Goose IPC	Real-time PCR kit for identification of goose DNA. 96 real-time PCR rxns with IPC, all reagents and controls included, for up to 46 samples.	96	5422220810
DNAAnimal Ident Turkey IPC	Real-time PCR kit for identification of turkey DNA. 96 real-time PCR rxns with IPC, all reagents and controls included, for up to 46 samples.	96	5422211510
DNAAnimal Ident Goat IPC	Real-time PCR kit for identification of goat DNA. 96 real-time PCR rxns with IPC, all reagents and controls included, for up to 46 samples.	96	5422211610
DNAAnimal Ident Sheep IPC	Real-time PCR kit for identification of sheep DNA. 96 real-time PCR rxns with IPC, all reagents and controls included, for up to 46 samples.	96	5422211710
DNAAnimal Ident Horse IPC (LR)	Real-time PCR kit for identification of horse DNA. 96 real-time PCR rxns with IPC, all reagents and controls included, for up to 46 samples.	96	5422220110
DNAAnimal Ident Water Buffalo IPC (LR)	Real-time PCR kit for identification of water buffalo DNA. 96 real-time PCR rxns with IPC, all reagents and controls included, for up to 46 samples.	96	5422220910
DNAAnimal Ident Donkey (LR)	Real-time PCR kit for identification of donkey DNA. 96 real-time PCR reactions, all reagents and controls included, for up to 46 samples.	96	5422220210

Control DNAs



Product	Quantity	Article No.
Genomic DNA Atlantic Halibut (<i>Hippoglossus hippoglossus</i>)	150 µl [100 copies/µl]	5212582401
Genomic DNA Bison (<i>Bison bison</i>)	150 µl [100 copies/µl]	5212583401
Genomic DNA Cattle (<i>Bos taurus</i>)	150 µl [100 copies/µl]	5212581301
Genomic DNA Chamoise (<i>Rupicapra rupicapra</i>)	150 µl [100 copies/µl]	5212583501
Genomic DNA Chicken (<i>Gallus gallus</i>)	150 µl [100 copies/µl]	5212580501
Genomic DNA Donkey (<i>Equus asinus</i>)	150 µl [100 copies/µl]	5212582801
Genomic DNA Duck	150 µl [100 copies/µl]	5212582501
Genomic DNA Fallow Deer	150 µl [100 copies/µl]	5212580401
Genomic DNA Gemsbok (<i>Oryx gazella</i>)	150 µl [100 copies/µl]	5212583701
Genomic DNA Gnu (<i>Connochaetes</i>)	150 µl [100 copies/µl]	5212583801
Genomic DNA Goat (<i>Capra hircus</i>)	150 µl [100 copies/µl]	5212581801
Genomic DNA Horse (<i>Equus caballus</i>)	150 µl [100 copies/µl]	5212582901
Genomic DNA Kudu (<i>Tragelaphus</i>)	150 µl [100 copies/µl]	5212584001
Genomic DNA Pig (<i>Sus scrofa domestica</i>)	150 µl [100 copies/µl]	5212581501
Genomic DNA Pigeon (<i>Columba livia</i>)	150 µl [100 copies/µl]	5212584101
Genomic DNA Quail (<i>Coturnix coturnix</i>)	150 µl [100 copies/µl]	5212584201
Genomic DNA Rat (<i>Rattus norvegicus</i>)	150 µl [100 copies/µl]	5212585201
Genomic DNA Red Deer	150 µl [100 copies/µl]	5212581901
Genomic DNA Roe Deer	150 µl [100 copies/µl]	5212581201
Genomic DNA Sheep (<i>Ovis aries</i>)	150 µl [100 copies/µl]	5212581401
Genomic DNA Turkey (<i>Meleagris gallopavo</i>)	150 µl [100 copies/µl]	5212581101
Genomic DNA Water Buffalo (<i>Bubalus bubalis</i>)	150 µl [100 copies/µl]	5222580001
Genomic DNA Yak (<i>Bos mutus</i>)	150 µl [100 copies/µl]	5212584401

In case you do see the need for a different concentration of your DNA material, please do not hesitate to contact us.





ENVIRONMENT AND WATER

Water is critical for life itself, making it arguably the most valuable resource on the planet. As a result, water is the object of numerous environmental laws and regulations throughout the world. These regulations address not only drinking water but the entire water cycle including surface and ground water, recreational, process and waste water.

Due to the diversity of water testing applications, flexibility is important and can provide distinct advantages to users in meeting specific testing objectives. Traditional analytical laboratory testing can often be costly and time consuming. Our commercially available test kits allow for accurate, on-site testing, providing near real time answers for critical decision-making, often at a lower cost than traditional methods.

ABRAXIS® Environment and Water Kits

We provide innovative, near real time, field and lab based testing solutions for water and environmental sample testing.

Algal Toxins

Our algal toxin products are available in multiple formats and applications to meet the diverse testing objectives of our customers. Test kits include quantitative ELISA plate kits as well as semi-quantitative/qualitative lateral flow kits. We hold the exclusive world-wide license for the ADDA-specific microcystins antibody, making us the sole commercial manufacturer of Microcystins ADDA test kits as specified in EPA Method 546. We also offer testing solutions for Cylindrospermopsin, Saxitoxins, Anatoxin-a, Brevetoxin, Anabaenopeptins, Okadaic acid, Domoic acid and BMAA in various sample matrices.

Pesticides (including Glyphosate):

We offer the only commercially available AOAC approved Glyphosate ELISA kit for Durum Wheat, Whole Oats, Groats, Yellow Peas and Red Lentils. We also offer quantitative and qualitative detection of glyphosate using ELISA and lateral flow dipstick in other matrices including water, honey, coffee, grains, legumes and oats. Other pesticide kits include 2,4-D, Alachlor, Atrazine, Azoxystrobin, DDE/DDT, Diuron, Fluridone, Imidacloprid, Metolachlor, Organophosphates/Carbamates, Pyrethroids and Trifluralin.

Industrial Chemicals / Hydrocarbons

One of our core strengths is developing sensitive and specific antibodies against small molecules. We provide test kits for a variety of environmental contaminants.

Markers for Bioactivity

Certain compounds found in consumer products can be used as markers of human bioactivity. We offer quantitative assays to measure these biomarkers in environmental samples.

Surfactants

Generally surfactants consist of both an alkyl chain hydrophobic group as well as a functional hydrophilic group. This amphiphilic structure helps to lower surface tension between phases, making surfactants ideal for use as detergents, wetting agents, emulsifiers, foaming agents, or dispersants with a wide range of industrial and consumer use. We offer quantitative ELISA test kits for surfactants to monitor their presence in environmental samples.

Equipments

The RapidScan ST5-W lateral flow assay reader is a portable instrument designed for field and in-process testing applications requiring qualitative to semi-quantitative test results. It is compatible with our glyphosate dipstick kits, and with the allergen and GMO strips offered by Gold Standard Diagnostics.

Key Benefits

- 20+ years of partnership to meet and exceed the needs of research and industry
- Long history of collaboration with key government agencies
- Unmatched expertise in rapid water and environmental testing
- Multiple technologies, formats and applications to meet customer-specific objectives

Algal Toxins ELISA Plate & Tube Test Kits



Product	Product format	Quantity	Article No.
ABRAXIS® Anabaenopeptins	ELISA Plate	96 tests	520070
ABRAXIS® Anatoxin-a (VFDF)	ELISA Plate	96 tests	520060
ABRAXIS® BMAA	ELISA Plate	96 tests	520040
ABRAXIS® Brevetoxin (NSP)	ELISA Plate	96 tests	520034
ABRAXIS® Cylindrospermopsin	ELISA Plate	96 tests	522011
ABRAXIS® Domoic Acid (ASP)	ELISA Plate	96 tests	520505
ABRAXIS® Domoic Acid (ASP) (Onsite Technologies)	ELISA Plate	96 tests	ON0021
ABRAXIS® Microcystins	ELISA Tube	40 tests	520012A
ABRAXIS® Microcystins/Nodularins (ADDA) (EPA ETV) (EPA Method 546)	ELISA Plate	96 tests	520011
ABRAXIS® Microcystins/Nodularins (ADDA) OH (EPA ETV)	ELISA Plate	96 tests	520011OH
ABRAXIS® Microcystins/Nodularins (ADDA) SAES	ELISA Plate	96 tests	520011SAES
ABRAXIS® Microcystins/Nodularins DM (EPA ETV) (CCL4)	ELISA Plate	96 tests	522015
Microcystins/Nodularins PP2A (EPA ETV)	ELISA Plate	96 tests	520032
ABRAXIS® Okadaic Acid (DSP)	ELISA Plate	96 tests	520021
Okadaic Acid (DSP), PP2A	ELISA Plate	96 tests	520025
ABRAXIS® Saxitoxins (PSP)	ELISA Plate	96 tests	52255B
ABRAXIS® Saxitoxins (PSP) Shipboard (ISSC 09-107)	ELISA Plate	96 tests	52255SB

ABRAXIS® Algal Toxins Dipstick Test Kits



Product	Product format	Quantity	Article No.
Anatoxin-a (VFDF)	Dipstick	5 tests 20 tests	520042 520043
Cylindrospermopsin with QuikLyse™ Feature	Dipstick	5 tests 20 tests	520029 520030
Microcystins with QuikLyse™ Feature, Source Drinking Water	Dipstick	5 tests 20 tests	520019 520020
Microcystins with QuikLyse™ Feature, Recreational Water	Dipstick	5 tests 20 tests	520023 520022
Microcystins, Finished Drinking Water, 0.5 - 5 ppb	Dipstick	5 tests 20 tests	520016 520017
Microcystins, Finished Drinking Water, 0.3 - 3 ppb	Dipstick	20 tests	520046
Saxitoxin PSP, 0.2 - 3 ppb	Dipstick	5 tests 20 tests	520044 520045

ABRAXIS® Algal Toxins Standards

Product	Product format	Quantity	Article No.
ABRAXIS® Homo-anatoxin-a	Standard	4 µg/mL, 0.5 ml	301295
Anatoxin-a (+), Certified	Standard	~5 µg/ml, 0.5 ml	300586
Anatoxin-a (+)	Standard	10 µg/ml, 0.5 ml	300620
Dihydroanatoxin-a	Standard	10 µg/ml, 0.5 ml	300655
13 C4-(+)-Anatoxin-a	Standard	10 µg/ml, 0.5 ml	300505
BMAA D3	Standard	1.0 mg	300622
Cylindrospermopsin	Standard	0.5 mg	300624
Cylindrospermopsin, Certified	Standard	~10 µg/ml, 0.5 ml	300588
Cylindrospermopsin	Standard	10 µg/ml, 1 ml	300626
7-epi-Cylindrospermopsin, supplied dry	Standard	5 µg	300651
7-deoxy-Cylindrospermopsin, supplied dry	Standard	5 µg	300653
[15N5] Cylindrospermopsin	Standard	10 µg/ml, 0.5 ml	300504
[15N5] 7-deoxy-Cylindrospermopsin, dry	Standard	5 µg	300508

Product	Product format	Quantity	Article No.
[15N5] 7-epi-Cylindrospermopsin, dry	Standard	5 µg	300506
Desmethyl Microcystin LR	Standard	10 µg/ml, 1ml	300656
Microcystin HiIR	Standard	10 µg/ml, 1ml	300654
Microcystin LA	Standard	10 µg/ml, 1ml	300628
Microcystin LF, Deuterated	Standard	10 µg/ml, 0.5ml	300500
Microcystin LF	Standard	10 µg/ml, 1ml	300646
Microcystin LR	Standard	0.5 mg	300630
Microcystin LR	Standard	10 µg/ml, 1ml	300632
Microcystin LR Deuterated (D7)	Standard	10 µg/ml, 0.5ml	300502
Microcystin LR Ethylated (D5, 99%)	Standard	25 µg	300507
Microcystin LR, Certified	Standard	10 µg/ml, 0.5 ml	300639
Microcystin LW	Standard	10 µg/ml, 1 ml	300650
Microcystin LY	Standard	10 µg/ml, 1 ml	300634
Microcystin RR	Standard	10 µg/ml, 1 ml	300636
Microcystin RR, Certified	Standard	10 µg/ml, 0.5 ml	300582
Microcystin WR	Standard	10 µg/ml, 1 ml	300652
Microcystin YR	Standard	10 µg/ml, 1 ml	300638
Nodularins	Standard	10 µg/ml, 1 ml	300640
Nodularins, Certified	Standard	10 µg/ml, 0.5 ml	300591
Saxitoxins	Standard	10 µg/ml, 1 ml	300642
Saxitoxins, Certified	Standard	20 µg/ml, 0.5 ml	300590
[15N7] Saxitoxin	Standard	5 µg	300956
Saxitoxins (PSP) (EC 2002/225 Compliant) Seawater Standards Set	Standard	Set	52255SW

ABRAXIS® Algal Toxins QC Materials

Product	Product format	Quantity	Article No.
Microcystins/Nodularins (ADDA) Accessory Pack for Method 546 (for QC)	Accessory Pack	1 pack	520013
Microcystins LR Check Samples (0, 2 and 20 ppb)	Check Samples	1 set	422011
Microcystins/Nodularins (ADDA) Spiking Solution, MCT-LR	Spiking Solution	50µg/L, 10 ml	300702
Cylindrospermopsin MDL Study Solution	MDL Study Solution	1 ml x 3 vials	300705
Cylindrospermopsin MDL Study Solution (for CAAS/CAAS Cube)	MDL Study Solution	10 ml x 1 vial	300705C
Microcystins MDL Study Solution	MDL Study Solution	1 ml x 3 vials	300700
Microcystins MDL Study Solution (for CAAS/CAAS Cube)	MDL Study Solution	10 ml x 1 vial	300700C
Saxitoxins (PSP) MDL Study Solution	MDL Study Solution	1 ml x 3 vials	300710
Saxitoxins (PSP) MDL Study Solution (for CAAS/CAAS Cube)	MDL Study Solution	10 ml x 1 vial	300710C

ABRAXIS® Algal Toxins Related Products

Product	Product format	Quantity	Article No.
QuikLyse™, Rapid Lysing and Filtration Kit	Accessory Pack	45 tests	529911
Microcystins Field Screen Accessory Pack, for Freeze-thaw Lysing	Accessory Pack	20 tests	530040
Microcystins Field Screen Accessory Pack, for Filtration	Accessory Pack	20 tests	530038
Anatoxin-a/Saxitoxins, Sample Diluent (10X solution)	Reagent	25 ml 1 L	530010 53001L
Brevetoxin (NSP) Sample Diluent	Reagent	30 ml	520027
Brevetoxin (NSP) Seawater Sample Pretreatment Solution	Reagent	25 ml	520028
Cylindrospermopsin, Seawater Sample Treatment Solution	Reagent	45 tests	529914
Microcystins/Nodularins (ADDA) (EPA ETV) Seawater Clean Up Kit	Reagent	45 tests	529912
Microcystins/Nodularins DM Seawater Sample Treatment Solution	Reagent	45 tests	529913
Saxitoxin PSP Shellfish Extraction Kit	Accessory	5 tests	520047

Industrial Chemicals / Hydrocarbons

Product	Product format	Quantity	Article No.
Alkylphenols (AP)*, **	ELISA plate	96 tests	590012
Alkylphenol Ethoxylate (APE)*, **	ELISA Plate	96 tests	520041
ABRAXIS® Dioxins/Furans (TCDD)*	ELISA plate	96 tests	530037
ABRAXIS® Coplanar PCBs*	ELISA plate	96 tests	530011
Linear Alkylbenzene Sulfonate (LAS)*	ELISA Plate	96 tests	520031
ABRAXIS® PCBs Higher Chlorinated*	ELISA plate	96 tests	530041
ABRAXIS® Phthalates*	ELISA plate	96 tests	530050
ABRAXIS® Triclosan*	ELISA plate	96 tests	530114
ABRAXIS® Triclosan*	Magnetic Particle	100 tests	530111
Bisphenol A (BPA)*, **	ELISA Plate	96 tests	590023

* Minimum order quantity: 5 kits

** Not for sale in the EU

ABRAXIS® Industrial Chemicals / Hydrocarbons Related Products

Product	Product Format	Quantity	Article No.
PCBs Higher Chlorinated (1254, 1260, 1248, 1242, 1262, 1232, 1268, 1016, or 1221)	Calibrator Sets		530003
Soil Extraction Kit	Sample Prep Kit	12 tests	530006

ABRAXIS® Markers for Bioactivity

Product	Product format	Quantity	Article No.
Caffeine	ELISA plate	96 tests	515575
Carbamazepine*	ELISA plate	96 tests	515585

*Minimum order quantity: 5 kits

ELISA Plate, Tube & Test Strip Readers & Equipment

Product	Product format	Article No.
RapidScan ST5-W Lateral Flow Reader	Reader	475035 (US orders)
RapidScan ST5-W Reader Adapter for Pesticides (Glyphosate)	Adapter	475032 (US orders)
Microplate Reader, Model 4303	Reader	475010
Microplate Strip Reader, Model 4700 with Printer	Reader	475007
AbraScan® Dipstick Reader III, Handheld reader with supplemental software	Reader	475025B
Saxitoxins (PSP) Shipboard (ISSC 05-111), Starter Pack	System Package	470061C
Saxitoxins (PSP) Shipboard (ISSC 05-111), Shipboard Starter Pack w/o computer	System Package	470061D

ABRAXIS® Pesticides

Product	Product format	Quantity	Article No.
2,4-D*	ELISA plate	96 tests	54003A
2,4-D*	Tube	40 tests	54004B
Alachlor*	Magnetic Particle	100 tests	500071
Alachlor*	ELISA Plate	96 tests	500076
Atrazine*	Magnetic Particle	100 tests	500001
Atrazine	ELISA Plate	96 tests	520005
Azoxystrobin*	ELISA Plate	96 tests	500701
DDE/DDT*	ELISA Plate	96 tests	540041
Diuron*	ELISA Plate	96 tests	520001
Fluridone*	Magnetic Particle	100 tests	500511
Imidacloprid/Clothianidin	ELISA Plate	96 tests	500800
Metolachlor*	Magnetic Particle	100 tests	500061
Metolachlor*	ELISA Plate	96 tests	500065
Organophosphate/Carbamate (OP/C)*	Tube	20 tests	550051
Organophosphate/Carbamate (OP/C)	ELISA Plate	96 tests	550055
Pyrethroids*	ELISA Plate	96 tests	500204
Trifluralin	ELISA Plate	96 tests	500601

* Minimum order quantity: 5 kits

ABRAXIS® Pesticides: Glyphosate

Product	Product format	Quantity	Article No.
Glyphosate	Magnetic Particle	120 tests	500081
Glyphosate	ELISA Plate	96 tests	500205
Glyphosate ELISA AOAC Test Kit for Durum Wheat, Whole Oats, Groats, Yellow Peas & Red Lentils	ELISA Plate	96 tests	500089
Glyphosate	Dipstick	5 tests	500098
Glyphosate	Dipstick	20 tests	500095

Vitellogenins (Not available for sale in Europe)

Product	Product format	Quantity	Article No.
Salmonid Vitellogenins	ELISA	480 tests	V01002402-480
Carp Vitellogenins	ELISA	480 tests	V01003402-480
Rainbow Trout Vitellogenins	ELISA	480 tests	V01004402-480
Zebrafish Vitellogenins	ELISA	480 tests	V01008402-480
Medaka Vitellogenins	ELISA	480 tests	V01013403-480
Fathead Minnow Vitellogenins	ELISA	96 tests	V01018401-096
Fathead Minnow Vitellogenins	ELISA	480 tests	V01018401-480

LIFE SCIENCES / R&D

AbraMag® Magnetic Purification Kits

Product	Product format	Quantity	Article No.
Genomic DNA Magnetic Purification Kit	Magnetic Beads Kit	100 tests	555020

Magnetic Separator Racks

Product	Compatibility	Article No.
Plate Magnetic Separator	1 x 96-well plate (side pull)	472235
Plate Magnetic Separator	2 x 96-well plate (bottom pull)	472236
Tube Magnetic Separator	60 x 11-13 mm tubes	472231
Tube Magnetic Separator	6 x 50 ml tubes	472291
Tube Magnetic Separator	5 x 15 ml tubes and 3 x 50 ml tubes	472250
Tube/Microcentrifuge Tube Magnetic Separator	1 x 1.5 ml or 1 x 15 ml and 1 x 50 ml	472280
Microcentrifuge Tube Magnetic Separator	6 x 1.5 ml microcentrifuge tubes	472260
Microcentrifuge Tube Magnetic Separator	32 x 1.5 ml microcentrifuge tubes	472287
Flask Magnetic Separator	Tissue culture flasks	472240

AbraMag® Magnetic Beads

Product	Product format	Quantity	Article No.
Amine	Magnetic Beads	50 mg	544080
Amine	Magnetic Beads	125 mg	544081
Carboxyl	Magnetic Beads	50 mg	544085
Carboxyl	Magnetic Beads	125 mg	544086
Biotin	Magnetic Beads	10 mg	544000
Biotin	Magnetic Beads	25 mg	544001
Biotin	Magnetic Beads	5 mg	544002
Streptavidin	Magnetic Beads	10 mg	544050
Streptavidin	Magnetic Beads	25 mg	544051
Streptavidin	Magnetic Beads	5 mg	544052
anti-Rabbit IgG	Magnetic Beads	5 mg	544012
anti-Mouse IgG	Magnetic Beads	20 mg	544020
anti-Mouse IgG	Magnetic Beads	5 mg	544022
anti-Human IgG	Magnetic Beads	20 mg	544060
anti-Human IgG	Magnetic Beads	100 mg	544061
anti-Human IgG	Magnetic Beads	5 mg	544062
Protein A	Magnetic Beads	10 mg	544030
Protein A	Magnetic Beads	25 mg	544031
Protein A	Magnetic Beads	5 mg	544032
Protein G	Magnetic Beads	25 mg	544041
Protein G	Magnetic Beads	5 mg	544042
DNA Purification	Magnetic Beads	12 mg	544090
PCR Clean-Up and Size Select	Magnetic Beads	5 ml	544100
PCR Clean-Up and Size Select	Magnetic Beads	50 ml	544103





VETERINARY DIAGNOSTICS

In industrial livestock production, operating conditions are optimized to achieve the highest production output while minimizing costs. Given the high density of livestock and the production pressure, the emergence of infectious diseases is a major risk, and therefore prevention and control measures are essential.

Our diagnostic kits support the animal health management by:

- Detecting and monitoring epidemiological risks,
- Supporting vaccines & treatment development,
- Controlling the quality of produced meat,
- Improving animal welfare.

Veterinary Diagnostic Kits

We are engaged in the development, manufacturing and distribution of ELISA, Lateral Flow and PCR diagnostic kits, with an emphasis on infectious diseases for both farm animals and pets. Our easy-to-use and reliable test kits, based on high-quality reagents, are used for the diagnosis of bacterial, viral and parasitic diseases.

Veterinary diagnostic ELISA kits

- Easy and reliable tests, based on high quality reagents (recombinant antigens and monoclonal antibodies)
- Wide range of infectious diseases and animal species covered
- Different presentations available for the best adaptation to the requirements of each client

Veterinary diagnostic PCR kits

NEW! The veterinary molecular portfolio is expanded now with over 200 real-time PCR assays, offering quick, flexible and user-friendly solutions, both for livestock and companion animals.

From bacterial typing to newly designed PRRSV assays, we provide a reliable and cost-effective solution for your testing needs.

Most of our kits share the following features:*

- Convenient format, ready to use assay mix
- Optimized sensitivity
- Co-amplification of internal control
- Homogeneous thermal profile, allowing parallel testing of multiple parameters
- Tested with reference strains, field isolates and clinical samples
- Available in two formats for best flexibility: 50 and 100 reactions

Veterinary diagnostic Lateral Flow Assays

- Ease of use
- Can be applied directly on the field
- High sensitivity and specificity rates

*Some specific kits are not provided in a single-tube format, or use a different amplification control. Contact technical support for the specific features of your assay of interest

SEROLOGICAL ASSAYS

MULTISPECIES specialities



Product	Product description	No. of tests	Article No.
BRUCELLOSIS			
INgesim Brucella Compac 2.0	Blocking ELISA for the detection of specific antibodies to Brucella spp. in ruminants and porcine serum samples.	2 plates kit	192
		5 plates kit	480
CRYPTOSPORIDIOSIS			
INgezim Crypto CROM	Lateral Flow Assay for the detection of Cryptosporidium antigen in biological samples (faeces from all species).	12 individual devices	12
		30 individual devices	30
GIARDIOSIS			
INgezim Giardia CROM	Lateral Flow Assay for the detection of Giardia antigen in biological samples (faeces from all species).	12 individual devices	12
		30 individual devices	30
INFLUENZA A			
INgezim Influenza A	Blocking ELISA for the detection of specific antibodies to Influenza type A virus in serum samples from different species.	2 plates kit 5 plates kit	192 480
ROTAVIROSIS			
INgezim Rotavirus DAS	Double antibody ELISA for the detection of Rotavirus (Type A) antigen in biological samples (faeces from all species).	1 plate kit	96
INgezim Rota CROM	Lateral Flow Assay for the detection of Rotavirus (Type A) antigen in biological samples (faeces from all species).	12 individual devices	12
		30 individual devices	30
TUBERCULOSIS			
INgezim Tuberculosis DR	Double recognition ELISA for specific antibodies detection to Mycobacterium bovis in serum samples from wild and domestic animals, except cattle.	2 plates kit 5 plates kit	192 480
WEST NILE FEVER			
INgezim West Nile Compac	Blocking ELISA for the detection of specific antibodies to WNV in birds and equine serum samples.	2 plates kit 5 plates kit	192 480
SARS-CoV-2			
INgezim Covid Vet	Indirect ELISA for the detection of specific antibodies against S protein of the SARS-CoV-2 virus in serum and plasma samples of minks, ferrets, cats and dogs.	2 plates kit	192
		5 plates kit	480
BORRELIA			
Borrelia burgdorferi Veterinary IgG ELISA	Indirect ELISA for the detection of specific IgG-antibodies to Borrelia burgdorferi in dog or horse serum. (Virotech)	1 plate kit	96 tests
Borrelia Veterinary plus OspA IgG LINE Immunoblot (anti-dog)	Immunoblot test kit for the quantitative detection of Borrelia burgdorferi sensu lato specific IgG antibodies in dog or horse serum. This test kit can distinguish a wildtype infection from a vaccination. (Virotech)		32 tests

PORCINE specialities



Product	Product description	No. of tests	Article No.
AUJESZKY DISEASE (ADV or PRV)			
INgezim ADV TOTAL	Indirect ELISA for the detection of specific total antibodies to ADV (vaccinated and infected animals) in porcine serum samples.	2 plates kit	192
		5 plates kit	480
INgezim ADV gE Plus	Blocking ELISA for the detection of specific antibodies to ADV gE glycoprotein in porcine serum samples.	2 plates kit 5 plates kit	192 480
INgezim ADV gB	Blocking ELISA for the detection of specific antibodies to ADV gB glycoprotein in porcine serum samples.	2 plates kit	192
		5 plates kit	480
CLASSICAL SWINE FEVER (CSFV)			
INgezim CSF Compac	Blocking ELISA for the detection of specific antibodies to Classical Swine Fever Virus in porcine serum samples.	2 plates kit 5 plates kit	192 480
AFRICAN SWINE FEVER (ASFV)			
INgezim PPA DAS 2.0	Double antibody ELISA for the detection of ASFV antigen in biological samples.	1 plate kit 5 plates kit	96 480
INgezim ASF CROM Ag	Lateral Flow Assay for the detection of ASFV antigen in porcine blood samples.	30 individual devices	30
		100 individual devices	100
INgezim ASFV-R	Immunoenzymatic assay based on indirect ELISA technique for the detection of specific antibodies to cp312 and p30 proteins of ASFV in serum, blood (fresh or on paper) and spleen exudate samples, from swine and wild boar.	2 plates kit 5 plates kit	192 480
INgezim PPA CROM Anticuerpo	Lateral Flow Assay for the detection of specific antibodies to ASFV in porcine serum and whole blood samples.	30 individual devices	30
		100 individual devices	100
INgezim PPA Compac	Blocking ELISA for the detection of specific antibodies to ASFV in porcine serum samples.	2 plates kit 5 plates kit	192 480
INgezim ASFV/CSFV CROM Ab	Specific antibodies against to classical swine fever and African swine fever virus	25 individual devices	25
PORCINE BRUCELLOSIS			
INgezim Brucella Porcina	Indirect ELISA for the detection of specific antibodies to Brucella suis in porcine serum samples.	2 plates kit 5 plates kit	192 480
ERYSIPELAS			
INgezim Mal Rojo	Indirect ELISA for the detection of specific antibodies to E. Rhusiopathiae in porcine serum samples.	2 plates kit 5 plates kit	192 480
GLÄSSER DISEASE			
INgezim Haemophilus	Indirect ELISA for the detection of specific antibodies to Haemophilus parasuis in porcine serum samples.	2+2 plates kit	192
ENZOOTIC PNEUMONIA			
INgezim M. hyo Compac	Blocking ELISA for the detection of specific antibodies to Mycoplasma hyopneumoniae in porcine serum samples.	2 plates kit 5 plates kit	192 480
PORCINE INFLUENZA			
INgezim Influenza Porcina	Indirect ELISA for the detection of specific antibodies to SIV in porcine serum samples.	2 plates kit 5 plates kit	192 480
PORCINE CIRCOVIRUS			
INgezim PCV DAS	Double antibody ELISA for the detection of PCV2 antigen in Virus culture samples.	1 plate kit	96
INgezim Circovirus IgM/IgG	Capture ELISA for the detection of specific IgMs and IgGs to PCV2 in porcine serum samples.	2+2 plates kit	192
INgezim Circo IgG	Indirect ELISA for the detection of specific antibodies to PCV2 in porcine serum samples.	2 plates kit 5 plates kit	192 480
PORCINE PARVOVIRUS (PPV)			
INgezim PPV	Indirect ELISA for the detection of specific antibodies to PPV in porcine serum samples.	2 plates kit	192
		5 plates kit	480
INgezim PPV Compac	Blocking ELISA for the detection of specific antibodies to PPV in porcine serum samples.	2 plates kit	192
		5 plates kit	480
INgezim PPV DAS	Double antibody ELISA for the detection of PPV antigen in biological samples including virus cultures.	1 plate kit	96
PORCINE CORONAVIROSI (PRCV) AND TRANSMISSIBLE GASTROENTERITIS (TGEV)			
INgezim Corona Diferencial 2.0	Blocking ELISA for the detection and differentiation of antibodies to TGEV and PRCV in porcine serum samples.	2 plates kit	192
		5 plates kit	480
INgezim TGEV 2.0	Blocking ELISA for the detection of specific antibodies to TGEV in porcine serum samples.	2 plates kit	192
		5 plates kit	480
INgezim Coronavirus Porcino 2.0	Blocking ELISA for the detection of specific antibodies to PRCV/TGEV in porcine serum samples.	2 plates kit 5 plates kit	192 480

Product	Product description	No. of tests	Article No.	
INgezim PEDV	Indirect ELISA for detection of specific antibodies to PEDV in porcine serum samples.	2 plates kit 5 plates kit	192 480	11.PED.K.1/2 11.PED.K.1/5
PORCINE PLEUROPNEUMONIA				
INgezim APP MIX	Indirect ELISA for the detection of antibodies against Actinobacillus pleuropneumoniae serotypes 1-2-9-11, 3-6-8-15 and 4-5-7 in porcine serum.	6 plates kit	576	11.APP.K1/6
INgezim APP MIX 10,12	Indirect ELISA for the detection of antibodies against Actinobacillus pleuropneumoniae serotypes 10 and 12 in porcine serum.	2 plates kit	192	11.APX.K1/2
PORCINE REPRODUCTIVE AND RESPIRATORY SYNDROME (PRRSV)				
INgezim PRRS DR	Double recognition ELISA for the detection of specific antibodies to PRRSV in porcine serum samples.	2 plates kit 5 plates kit	192 480	11.PRS.K.0/2 11.PRS.K.0/5
INgezim PRRS Universal	Indirect ELISA for the detection of specific antibodies to PRRSV (EU and US isolates) in porcine serum samples.	2 plates kit 5 plates kit	192 480	11.PRU.K.1/2 11.PRU.K.1/5
INgezim PRRS 2.0	Indirect ELISA for the detection of specific antibodies to PRRSV (EU and US strains) in porcine serum samples.	2 plates kit 5 plates kit	192 480	11.PR2.K.1/2 11.PR2.K.1/5
PORCINE ROTAVIROSI				
INgezim Rotavirus Porcino	Indirect ELISA for the detection of specific antibodies to Rotavirus (Type A) in porcine serum samples.	2 plates kit	192	11.RTP.K.1/2
PORCINE TUBERCULOSIS				
INgezim TB porcine	Indirect ELISA for the detection of specific antibodies to Mycobacterium bovis in wild boar and pig serum.	2 plates kit 5 plates kit	192 480	11.TBP.K.1/2 11.TBP.K.1/5
INgezim TB CROM Ab	Double recognition Lateral Flow Assay for specific detection of Mycobacterium bovis antibodies in swine and wild boar blood and serum.	30 individual devices 100 individual devices	30 100	11.TBP.K41/30 11.TBP.K41/100

RUMINANTS specialities



Product	Product description	No. of tests	Article No.	
BOVINE BESNOITIOSIS				
INgezim Besnoitia	Indirect ELISA for the detection of specific antibodies to Besnoitia besnoiti in bovine serum samples.	2 plates 5 plates	192 480	12.BES.K.1/2 12.BES.K.1/5
BOVINE LEUKOSIS (BLV)				
INgezim BLV Compac 2.0	Blocking ELISA for the detection of specific antibodies to BLV in bovine serum samples and milk samples.	2 plates kit 5 plates kit 10 plates kit	192 480 960	12.BLV.K.3/2 12.BLV.K.3/5 12.BLV.K.3/10
INgezim BLV Confirmación	Indirect ELISA for the confirmation of specific antibodies to BLV in bovine serum samples.	5+5 plates kit	480	12.BLV.K.1/5
BOVINE RESPIRATORY SYNCYTIAL (BRSV)				
INgezim BRSV Compac	Blocking ELISA for the detection of specific antibodies to BRSV in bovine serum samples.	2 plates kit 5 plates kit	192 480	12.BRS.K.3/2 12.BRS.K.3/5
BRUCELOSIS				
INgezim Brucella Bovina Milk	Indirect ELISA for the detection of specific antibodies to Brucella in bovine milk samples (individual or tank samples)	6 plates kit	576	12.BB.K.1/6
INgezim Brucella Bovina 2.0	Indirect ELISA for the detection of specific antibodies to Brucella in bovine serum samples (individual or pooled samples).	2 plates kit 5 plates kit 10 plates kit	192 480 960	12.BB2.K.1/2 12.BB2.K.1/5 12.BB2.K.1/10
INgezim Brucella ovis	Indirect ELISA for the detection of specific antibodies to Brucella ovis in small ruminants serum samples.	2 plates kit 5 plates kit	192 480	13.BO.K.1/2 13.BO.K.1/5
INgezim Brucella Small Ruminants	Indirect ELISA for the detection of specific antibodies to Brucella in ruminants serum samples.	2 plates kit 5 plates kit	192 480	13.BM.K.1/2 13.BM.K.1/5
INgezim AGID	Agar Gel immuno-diffusion (AGID) assay for the detection of specific antibodies (infection Ab and no vaccination Ab) present in ruminant serum samples infected with Brucella abortus and melitensis.	6 Agar plates with 14 wells per plate	84	12.BB2.K.7/84

Product	Product description	No. of tests	Article No.	
BOVINE ROTAVIROSI				
INgezim Rotavirus Bovino	Indirect ELISA for the detection of specific antibodies to RTB (Type A) in ruminants serum samples.	2 plates kit	192	12.RT.K.1/2
BLUE TONGUE (BTV)				
INgezim BTV DR	Double recognition ELISA for the detection of specific antibodies to BTV in ruminants serum samples.	2 plates kit 5 plates kit	192 480	12.BTV.K.0/2 12.BTV.K.0/5
INgezim BTV DAS	Double antibody ELISA for the detection of BTV antigen in BTV culture samples (to evaluate the performance of the culturing).	1 plate kit	96	12.BTV.K.2
INgezim BTV CROM	Indirect Lateral Flow Assay for the detection of specific antibodies to BTV in ruminants serum samples.	30 individual devices	30	12.BTV.K.41/30
INgezim BTV Compac 2.0	Blocking ELISA for the detection of specific antibodies to BTV in bovine serum samples (individual samples).	2 plates kit 5 plates kit	192 480	12.BTV.K.3/2 12.BTV.K.3/5
MAEDI VISNA - CAPRINE ARTHRITIS ENCEPHALITIS				
INgezim Maedi Screening	Indirect ELISA for the detection of specific antibodies to small ruminants Lentivirus. in small ruminants serum samples.	2 plates kit 5 plates kit	192 480	13.SLS.K.1/2 13.SLS.K.1/5
INgezim Maedi Confirmación	Indirect ELISA for the detection of specific antibodies to small ruminants Lentivirus in small ruminants serum samples.	2+2 plates kit	192	13.SLC.K.1
BOVINE VIRAL DIARRHEA (BVDV)				
INgezim BVD DAS	Double Antibody Sandwich ELISA, for the detection of BVDV antigen in blood, sera, plasma, leukocytes, ear tissue and cell culture in bovine..	1 plate kit 5 plates kit	96 480	12.BVD.K.2/1 12.BVD.K.2/5
INFECTIOUS BOVINE RHINOTRACHEITIS (IBRV)				
INgezim IBR gE Compac	Blocking ELISA for the detection of specific antibodies to gE protein from Infectious bovine Rhinotracheitis Virus (IBRV) in bovine serum samples.	2 plates kit 5 plates kit	192 480	12.IBE.K.3/2 12.IBE.K.3/5
INgezim IBR Compac 2.0.	Blocking ELISA for the detection of specific antibodies to IBRV gB glycoprotein (total) in bovine serum samples.	2 plates kit 5 plates kit	192 480	12.BHV.K.3/2 12.BHV.K.3/5
INgezim IBR 2.0.	Indirect ELISA for the detection of specific antibodies to IBRV (total) in bovine serum, plasma and milk samples.	2 plates kit 5 plates kit	192 480	12.BHV.K.1/2 12.BHV.K.1/5
RIFT VALLEY FEVER (RVFV)				
INgezim FVR Compac	Blocking ELISA for the detection of specific antibodies to RVFV in ruminants serum samples.	2 plates kit 5 plates kit	192 480	13.FVR.K.3/2 13.FVR.K.3/5
INgezim FVR IgM	Capture enzymatic immunoassay for the detection of specific antibodies (IgM) to RVFV in ruminants serum samples.	2 plates kit 5 plates kit	192 480	13.FVR.K.2/2 13.FVR.K.2/5
BOVINE NEOSPOROSIS				
INgezim Neospora 3.0.	Indirect ELISA for the detection of specific antibodies to Neospora caninum in bovine serum samples.	2 plates kit 5 plates kit	192 480	12.NC.K.1/2 12.NC.K.1/5
SCHMALLEBERG DISEASE (SBV)				
INgezim Schmallenberg Compac	Blocking ELISA for the detection of specific antibodies to Schmallenberg virus in ruminants serum samples.	2 plates kit 5 plates kit	192 480	13.SBV.K.3/2 13.SBV.K.3/5
PESTE DES PETITS RUMINANTS (PPRV)				
INgezim PPR Compac	Detection of specific antibodies to pestiviruses (BVDV y BDV) in serum and milk samples of bovine, ovine and goat.	2 plates kit 5 plates kit 10 plates kit	192 480 960	13.PPR.K.3/2 13.PPR.K.3/5 13.PPR.K3/10
PESTIVIRUS				
INgezim Pestivirus Compac	Detection of specific antibodies to pestiviruses (BVDV y BDV) in serum and milk samples of bovine, ovine and goat.	2 plates kit 5 plates kit	192 480	12.BVD.K.3/2 12.BVD.K.3/5
PARATUBERCULOSIS				
INgezim Paratuberculosis	Indirect ELISA for the detection of specific antibodies to Mycobacterium avium spp paratuberculosis in serum and milk ruminant samples.	2 plates kit 5 plates kit	192 480	12.PTB.K.1/5 12.PTB.K.1/2



CANINE specialities



Product	Product description	No. of tests	Article No.
CANINE CORONAVIRUS DISEASE (CCV)			
INgezim Corona Canino	Indirect ELISA for the detection of specific antibodies to CCV in canine serum samples.	1 plate kit	96 15.CCV.K.1
CANINE DISTEMPER (CDV)			
INgezim Moquillo IgG	Indirect ELISA for the detection of specific antibodies to CDV (IgGs) in canine serum samples.	1 plate kit	96 15.CDG.K.1
INgezim Moquillo IgM	Capture antibody ELISA for the detection of specific antibodies to CDV (IgMs) in canine serum samples.	1 plate kit	96 15.CDM.K.2
CANINE DISTEMPER (CDV)			
INgezim CDV-IC	Lateral Flow Assay for detection of Canine Distemper Virus in biological samples (tears, conjunctiva samples, nasal discharges, etc.).	12 & 30 individual devices	12 15.CDV.K.42/12 30 15.CDV.K.42/30
CANINE PARVOVIRUS DISEASE (CPV)			
INgezim Parvovirus IgM	Capture antibody ELISA for the detection of specific antibodies to CPV (IgMs) in canine serum samples.	1 plate kit	96 15.CPM.K.2
INgezim CPV DAS	Double antibody ELISA for the detection of CPV antigens in biological samples (dog's faeces).	1 plate kit	96 15.CPV.K.2
INgezim Parvo Canino	Indirect ELISA for the detection of specific antibodies to CPV in canine serum samples.	1 plate kit	96 15.CPV.K.1
CANINE PARVOVIRUS DISEASE (CPV)			
INgezim Parvo CROM	Lateral Flow Assay for the detection of CPV antigen in canine serum samples.	12 individual devices 50 individual devices	12 15.CP2.K.42/12 50 15.CP2.K.42/50
CANINE PARVOVIRUS DISEASE (CPV) & GIARDIA			
INgezim CPV/Giardia IC	Lateral Flow Assay for detection of canine parvovirus and Giardia lamblia antigen in biological samples (faeces and intestinal content).	12 individual devices	12 15.CGD.K.42/12
CANINE PARVOVIRUS DISEASE (CPV) & CORONAVIRUS			
INgezim CPV/CCV IC	Lateral Flow Assay for detection of Canine Parvovirus and Canine Coronavirus antigen in biological samples (faeces and intestinal content).	12 individual devices	12 15.CCD.K.42/12
CANINE PARVOVIRUS DISEASE (CPV), GIARDIA & CORONAVIRUS			
INgezim CPV/GIA/CCV IC	Lateral Flow Assay for the determination of parvovirus, canine coronavirus and Giardia lamblia in faeces samples.	12 individual devices	12 15.PGC.K.42/12
CANINE EHRLICHIOSIS			
INgezim Ehrlichia	Indirect ELISA for the detection of specific antibodies to Ehrlichia canis in canine serum samples.	1 plate kit 10 plates kit	96 15.EHR.K.1 960 15.EHR.K.1/10
INgezim Ehrlichia Vet	Indirect ELISA for the detection of specific antibodies to Ehrlichia canis in canine serum samples.	32 wells kit	32 15.EHR.K.8/32
CANINE EHRLICHIOSIS			
INgezim Ehrli CROM	Specific antibodies against to Ehrlichia canis	12 individual devices 30 individual devices	12 15.EHR.K.4/12 30 15.EHR.K.4/30

Product	Product description	No. of tests	Article No.
CANINE ERLICHIOSIS AND ANAPLASMOSIS			
INgezim Ehr/ANA IC	Lateral Flow Assay for the detection of anti-Ehrlichia canis and anti-Anaplasma antibodies.	12 individual devices	12 15.EHA.K.41/12
CANINE LEISHMANIOSIS			
INgezim Leishmania	Indirect ELISA for the detection of specific antibodies to Leishmania spp infantum in canine serum samples.	1 plate kit 10 plates kit	96 15.LSH.K.1 960 15.LSH.K.1/10
CANINE LEISHMANIOSIS			
INgezim Leishma CROM	Lateral Flow Assay for detection of antibodies to LSH in canine serum samples.	12 individual devices 50 individual devices	12 15.LSH.K.41/12 50 15.LSH.K.41/50
INgezim Leishmania Vet	Indirect ELISA for the detection of specific antibodies to Leishmania infantum in canine serum samples.	32 wells kit	32 15.LSH.K.8/32
RABIES			
E.I.A. Rabia	Double antibody enzymeimmunoassay for the quantification of rabies virus glycoprotein in infected cell culture samples.	2 plates kit	192 40.RAB.K.2/2
LYME DISEASE - BORRELIA BURGDORFERI			
INgezim Lyme CROM	Indirect Lateral Flow Assay for the detection of specific antibodies against to B. burgdogferi	12 individual devices	12 15.LY.K.4/12
DIROFILARIA IMMITIS - HEARTWORM			
INgezim Heart CROM	Indirect Lateral Flow Assay for the detection of dirofilaria immitis antigen	12 Individual devices 30 Individual devices	12 15.HW.K.4/12 30 15.HW.K.4/30
CANINE LEPTOSPIRA			
INgezim Leptospira IgM IC	Lateral flow test for the detection of IgM antibodies to Leptospira spp. in canine serum, plasma and whole blood.	12 individual devices	12 15.LEP.K.41
BRUCELLA CANIS			
INgezim Brucella IC	Lateral Flow Assay for the detection of antibodies to Brucella canis in canine serum, plasma and whole blood.	12 individual devices	12 15.BC*.K.41

RABBIT specialities



Product	Product description	No. of tests	Article No.
MYXOMATOSIS			
INgezim Myxomatosis	Indirect ELISA for the detection of specific antibodies to Myxomatosis virus in rabbit serum samples.	2 plates kit	192 17.MIX.K.1/2
RABBIT HAEMORRHAGIC DISEASE (RHDV)			
INgezim RHDV	Indirect ELISA for the detection of specific antibodies to RHDV in rabbit serum samples.	2 plates kit	192 17.RHD.K.1/2
INgezim RHDV DAS	Double antibody ELISA for the detection of RHDV antigen in rabbit liver and other biological samples.	1 plate kit	96 17.RHD.K.2
INgezim® RHDV1/2 DIF CROM	Duplex double antibody sandwich lateral flow assay for the detection of rabbit haemorrhagic disease virus antigen, differentiating between RHDV and RHDV2 in rabbit liver and liver exudate samples.	12 individual devices 30 individual devices	12 17.RHD.K.42/12 30 17.RHD.K.42/30

FELINE specialities



Product	Product description	No. of tests	Article No.
FELINE CORONAVIRUS (FCV)			
INgezim Corona Felino	Indirect ELISA for the detection of specific antibodies to FCV in feline serum samples.	1 plate kit	96 16.FC.V.K.1
INgezim FCoV IC	Lateral Flow Assay for detection of specific antibodies to FCV in serum and blood samples.	12 individual devices	12 16.FC.V.K.41/12
FELINE IMMUNODEFICIENCY (FIV)			
INgezim FIV	Indirect ELISA for the detection of specific antibodies to FIV in feline serum samples.	1 plate kit	96 16.FIV.K.1
INgezim FIV Vet	Indirect ELISA for the detection of specific antibodies to FIV in feline serum samples.	32 wells kit	32 16.FIV.K.8/32
INgezim FIV Crom	Lateral Flow Assay for the detection of specific antibodies to FIV in feline serum and blood samples.	12 individual devices 30 individual devices	12 16.FI2.K.41/12 30 16.FI2.K.41/30
FELINE LEUKAEMIA (FeLV)			
INgezim FeLV	Indirect ELISA for the detection of specific antibodies to FeLV gp70 in feline serum samples.	1 plate kit	96 16.FLV.K.1
INgezim FeLV CROM	Lateral Flow Assay for detection of FeLV (p27) antigen in feline serum samples.	12 individual devices 30 individual devices	12 16.FLV.K.42/12 30 16.FLV.K.42/30
INgezim FeLV DAS	Double antibody ELISA for the detection of FeLV (p27) antigen in feline serum samples.	1 plate kit	96 16.FLV.K.2
INgezim FeLV Vet	Double antibody ELISA for the detection of FeLV (p27) antigen in feline serum samples.	32 wells kit	32 16.FLV.K.9/32
INgezim FeLV/FIV IC	Lateral Flow Assay for detection of FeLV antigen and specific antibodies to FIV in feline blood, serum or plasma samples.	12 individual devices	12 16.FFD.K.40/12
FELINE PANLEUCOPENIA			
INgezim FPV IC	Lateral Flow Assay for detection of Feline Panleucopenia Virus antigen in biological samples (feces and intestinal content)	12 individual devices	12 16.FPV.K.42/12
FELINE TOXOPLASMA			
INgezim Feline toxoplasma IC	Lateral Flow Assay for the detection of IgG and IgM antibodies to Toxoplasma gondii in feline serum, plasma and whole blood.	12 individual devices	12 16.TOX.K.41/12

EQUINE specialities



Product	Product description	No. of tests	Article No.
AFRICAN HORSE SICKNESS (AHSV)			
INgezim AHSV Compac Plus	Blocking ELISA for the detection of specific antibodies to AHSV in equine serum samples.	2 plates kit 5 plates kit	192 14.AHS.K.3/2 480 14.AHS.K.3/5
INgezim PEA DAS	Double antibody ELISA for the detection of specific AHSV antigen in equine biological samples (spleen and tissues).	1 plate kit	96 14.PEA.K.2
INgezim AHSV CROM Anticuerpo	Lateral Flow Assay for the detection of specific antibodies to AHSV in equine serum samples.	30 individual devices	30 14.AHS.K.41/30
EQUINE INFECTIOUS ANEMIA (EIAV)			
INgezim Anemia DR	Double recognition ELISA for the detection of specific antibodies to EIAV in equine serum samples.	2 plates kit	192 14.AIE.K.0/2
INgezim Anemia CROM	Lateral Flow Assay for the detection of specific antibodies to EIAV in equine serum samples.	30 individual devices	30 14.AIE.K.41/30
EQUINE ARTERITIS (EAV)			
INgezim Arteritis 2.0	Indirect ELISA for the detection of specific antibodies to EAV in equine serum samples.	2+2 plates kit	192 14.EA2.K.1/4
EQUINE RHINOPNEUMONITIS			
INgezim Rinoneumonitis	ELISA for the detection of specific antibodies to Equine herpesvirus (EHV) subtypes 1 & 4 in equine serum samples	2 plates kit 5 plates kit	192 14.HVE.K.1/2 480 14.HVE.K.1/5
WEST NILE FEVER (WNV)			
INgezim West Nile IgM	Capture antibody ELISA for the detection of specific IgMs to WNV in equine serum samples.	1+1 plates kit	96 14.WNV.K.2

VETLINE ASSAYS

VetLine is the veterinary product line of our strategic partner, Novatec Immundiagnostica (part of Gold Standard Diagnostics Europe), providing a wide range of ELISA kits for antibody detection across a range of species including canine, feline, bovine, porcine, caprine, and poultry.

- Ready-to-use and colour coded reagents
- Standardized procedures
- ELISAs with cut off control
- Easy to use on automated systems
- Snap-off microtiter strip
- Long shelf-life



CANINE specialities

Product	Product description	No. of tests	Article No.
VetLine Anaplasma	Indirect ELISA for the detection of antibodies to Anaplasma in canine serum and plasma samples.	1 plate kit	96 15.ANAV0850
VetLine Borrelia	Indirect ELISA for the detection of antibodies to Borrelia in canine serum and plasma samples.	1 plate kit	96 15.BORVT0040
VetLine Canine Distemper Virus (CDV)	Indirect ELISA for the detection of antibodies to CDV in canine serum and plasma samples.	1 plate kit	96 15.MEAVT0330
VetLine Canine Parvovirus (CPV)	Indirect ELISA for the detection of antibodies to CPV in canine serum and plasma samples.	1 plate kit	96 15.PARVT0370
VetLine Dirofilaria Antigen	Double antibody ELISA for the detection of Dirofilaria antigen in canine serum and plasma samples.	1 plate kit	96 15.DIRVT4760
VetLine Ehrlichia	Indirect ELISA for the detection of antibodies to Ehrlichia in canine serum and plasma samples.	1 plate kit	96 15.EHRVT0930
VetLine Leishmania	Indirect ELISA for the detection of antibodies to Leishmania in canine serum and plasma samples.	1 plate kit	96 15.LEIVT0310
VetLine Leptospira	Indirect ELISA for the detection of antibodies to Leptospira in canine serum and plasma samples.	1 plate kit	96 15.LEPVT0660
VetLine Babesia*	Indirect ELISA for the detection of antibodies to Babesia in canine serum and plasma samples.	1 plate kit	96 15.BABVT0890
VetLine Canine C-Reactive* Protein (CCRP) - coming soon	Indirect ELISA for the detection of antibodies to canine C-Reactive protein in canine serum and plasma samples.	1 plate kit	96 15.CCRPV4050
VetLine Echinococcus*	Indirect ELISA for the detection of antibodies to Echinococcus in canine serum and plasma samples.	1 plate kit	96 15.ECHVT0130
VetLine Leptospira IgM*	Indirect ELISA for the detection of IgM antibodies to Leptospira in canine serum and plasma samples.	1 plate kit	96 15.LEPVM0660
VetLine Toxocara*	Indirect ELISA for the detection of antibodies to Toxocara in canine serum and plasma samples.	1 plate kit	96 15.TOCVT0450

FELINE specialities



Product	Product description	No. of tests	Article No.
VetLine Feline Immunodeficiency Virus (FIV)	Indirect ELISA for the detection of antibodies to FIV in feline serum and plasma samples.	1 plate kit	96 16.FIVVT0750
VetLine Feline Leukemia Virus (FeLV) Antigen	Double antibody ELISA for the detection of FeLV antigen in feline serum and plasma samples.	1 plate kit	96 16.FELVT4800
VetLine Bartonella*	Indirect ELISA for the detection of antibodies to Bartonella in feline serum and plasma samples.	1 plate kit	96 16.BARVT0900

MULTISPECIES specialities



Product	Product description	No. of tests	Article No.
VetLine Brucella	Indirect ELISA for the detection of antibodies to Brucella in bovine and porcine serum, pooled serum and milk samples.	1 plate kit	96 10.BRUVT0050
VetLine TBE/FSME	Indirect ELISA for the detection of antibodies to TBE/FSME in Multispecies serum and plasma samples.	1 plate kit	96 10.TICVT0440
VetLine Toxoplasma	Indirect ELISA for the detection of antibodies to Toxoplasma in canine/feline serum and plasma samples.	1 plate kit	96 10.TOXVT0460
VetLine Toxoplasma IgM	Indirect ELISA for the detection of IgM antibodies to Toxoplasma in canine/feline serum and plasma samples.	1 plate kit	96 10.TOXVM0460
VetLine Giardia Antigen*	Double antibody ELISA for the detection of Giardia antigen in stool samples.	1 plate kit	96 10.GIAVT4160
VetLine TBE/FSME IgM*	Indirect ELISA for the detection of IgM antibodies to TBE/FSME in Multispecies serum and plasma samples.	1 plate kit	96 10.TICVM0440
VetLine Sarcoptes	Indirect ELISA for the detection of antibodies to Sarcoptes scabiei in serum samples.	1 plate kit	96 10.SARVT0980

PORCINE specialities



Product	Product description	No. of tests	Article No.
VetLine Trichinella	Indirect ELISA for the detection of antibodies to Trichinella in porcine serum and plasma samples.	1 plate kit	96 11.TRIVT0480
VetLine Pasteurella multocida Toxin Antibody *	Indirect ELISA for the detection of antibodies to Pasteurella multocida Toxin in porcine serum and plasma samples.	1 plate kit	96 11.PASVT0960

AVIAN specialities



Product	Product description	No. of tests	Article No.
VetLine Riemerella	Indirect ELISA for the detection of antibodies to Riemerella in poultry serum and plasma samples.	1 plate kit	96 18.RIEMVT0880

RUMINANT specialities



Product	Product description	No. of tests	Article No.
VetLine Bovine Haptoglobin*	Indirect ELISA for the detection of antibodies to Bovine Haptoglobin in bovine serum and plasma samples.	1 plate kit	96 12.BHAPV4040
VetLine Coxiella	Indirect ELISA for the detection of antibodies to Coxiella in plasma and milk.	1 plate kit	96 12.COXVT0600
VetLine Coxiella Phase 1*	Indirect ELISA for the detection of antibodies to Coxiella Phase 1 in serum, plasma and milk.	1 plate kit	96 12.COX1VT0600
VetLine Coxiella Phase 2*	Indirect ELISA for the detection of antibodies to Coxiella Phase 2 in serum plasma and milk.	1 plate kit	96 12.COX2VT0600

*For Research Use Only



Real-time PCR Assays (50 & 100 reactions)

PCR Kits for CATTLE



Product	Article No.
INgene q Anaplasma marginale	12.AMA.K.5/100
INgene q Anaplasma phagocytophilum	10.APH.K.5/100
INgene q Anaplasma spp.	10.ANS.K.5/100
INgene q Babesia bigemina	12.BBI.K.5/100
INgene q Babesia bovis	12.BBO.K.5/100
INgene Bacteroides fragilis enterotoxina	10.BFT.K.5/100
INgene q Besnoitia besnoiti	12.BES.K.5/100
INgene q Bibersteinia trehalosi	10.BIB.K.5/100
INgene q BoHV-1	12.BH1.K.5/100
INgene q BoHV-2	12.BH2.K.5/100
INgene q BoHV-4	12.BH4.K.5/100
INgene q Bovine Coronavirus	12.BCo.K.5/100
INgene q Bovine Parainfluenza 3	12.PI3.K.5/100
INgene q Bovine Torovirus	10.BoT.K.5/100
INgene q BRSV	12.BRS.K.5/100
INgene BRUCE-LADDER V *	10.BRU.K.5/50
INgene q Brucella spp.	10.BSP.K.5/100
INgene q Brucella Typing *	10.BRM.K.5TC/Q
INgene q Brucella Typing ROX *	10.BRM.K.5TX/Q
INgene q BVDV - BDV	10.BOD.K.5/100
INgene q C. fetus and T. foetus MULTIPLEX	12.XFE.K.5/100
INgene q Campylobacter coli	10.CAM.K.5/100
INgene q Campylobacter fetus	10.CFE.K.5/100
INgene q Campylobacter jejuni	10.CJE.K.5/100
INgene q Campylobacter spp.	10.CPY.K.5/100
INgene q Chlamydia abortus	10.CAB.K.5/100
INgene q Chlamydiaceae	10.CHL.K.5/100
INgene q Clostridioides difficile Toxin A	10.CDA.K.5/100
INgene q Clostridioides difficile Toxin B	10.CDB.K.5/100
INgene q Clostridium botulinum	10.CBO.K.5/100
INgene q Clostridium chauvoei	10.CHA.K.5/100
INgene q Clostridium haemolyticum	10.CLH.K.5/100
INgene q Clostridium novyi	10.CNO.K.5/100
INgene q Clostridium septicum	10.CSE.K.5/100
INgene q Corynebacterium pseudotuberculosis	10.COR.K.5/100
INgene q Coxiella burnetii	10.COX.K.5/100
INgene q Cryptosporidium parvum	10.CPA.K.5/100
INgene q Cryptosporidium spp.	10.CRY.K.5/100
INgene q Dichelobacter nodosus	10.DIN.K.5/100
INgene q Eimeria spp.	10.EIM.K.5/100
INgene q Fusobacterium necrophorus	10.FUS.K.5/100
INgene q Giardia intestinalis	10.GIN.K.5/100
INgene q Histophilus somni	10.HSO.K.5/100
INgene q Influenza D virus	10.IFD.K.5/100
INgene q Leukotoxin Mannheimia haemolytica	10.LKT.K.5/100
INgene q Listeria monocytogenes	10.LMO.K.5/100

Product	Article No.
INgene q M. bovis and S. aureus MULTIPLEX	10.XMA.K.5/100
INgene q Mannheimia haemolytica	10.MAN.K.5/100
INgene q Moraxella bovis	12.MRX.K.5/100
INgene q Mycoplasma bovis	12.MBO.K.5/100
INgene q Mycoplasma wenyonii	12.MYW.K.5/100
INgene q Neovirus	12.NEB.K.5/100
INgene q Neospora caninum	10.NEO.K.5/100
INgene q Norovirus Genotype 3	12.NVG.K.5/100
INgene q Paeniclostridium sordelli	10.CSO.K.5/100
INgene q Paratuberculosis	10.PTB.K.5/100
INgene q Paratuberculosis (multiplex)	10.XPT.K.5/100
INgene q Pasteurella multocida	10.PAS.K.5/100
INgene q Pathogenic Leptospira	10.LEP.K.5/100
INgene q Piroplasma	10.PIR.K.5/100
INgene q Prototheca spp.	10.PRT.K.5/100
INgene q Pseudomonas aeruginosa	10.PSE.K.5/100
INgene q Rhodococcus equi	10.REQ.K.5/100
INgene q Rotavirus A	10.RTA.K.5/100
INgene q Salmonella enterica	10.SEN.K.5/100
INgene q Salmonella infantis	10.STI.K.5/100
INgene q Staphylococcus aureus	10.SAU.K.5/100
INgene q Staphylococcus epidermidis	10.SEP.K.5/100
INgene q Staphylococcus haemolyticus	10.SHA.K.5/100
INgene q Streptococcus agalactiae	10.SAG.K.5/100
INgene q Streptococcus dysgalactiae	10.SDY.K.5/100
INgene q Streptococcus uberis	10.SUB.K.5/100
INgene q Theileria annulata	12.THA.K.5/100
INgene q Toxoplasma gondii	10.TOX.K.5/100
INgene q Tritrichomonas foetus	12.TRI.K.5/100
INgene q Ureaplasma diversum	12.URE.K.5/100

All kits are Real-Time PCRs (2 formats: 50 and 100 reactions).

Exceptions:

* 100 reactions format only

* conventional PCR, 50 reactions format only

PCR Kits for SMALL RUMINANTS



Product	Article No.
INgene q Anaplasma ovis	13.AOV.K.5/100
INgene q Anaplasma phagocytophilum	10.APH.K.5/100
INgene q Anaplasma spp.	10.ANS.K.5/100
INgene q Bacteroides fragilis enterotoxina	10.BFT.K.5/100
INgene q Bibersteinia trehalosi	10.BIB.K.5/100
INgene q Bovine Torovirus	10.BoT.K.5/100
INgene BRUCE-LADDER V *	10.BRU.K.5/50
INgene q Brucella ovis	13.BOV.K.5/100
INgene q Brucella spp.	10.BSP.K.5/100
INgene q Brucella Typing *	10.BRM.K.5TC/Q

Product	Article No.
INgene q Brucella Typing ROX *	10.BRM.K.5TX/Q
INgene q BVDV - BDV	10.BOD.K.5/100
INgene q Campylobacter coli	10.CAM.K.5/100
INgene q Campylobacter fetus	10.CFE.K.5/100
INgene q Campylobacter jejuni	10.CJE.K.5/100
INgene q Campylobacter spp.	10.CPY.K.5/100
INgene q Chlamydia abortus	10.CAB.K.5/100
INgene q Chlamydiaceae	10.CHL.K.5/100
INgene q Clostridioides difficile Toxin A	10.CDA.K.5/100
INgene q Clostridioides difficile Toxin B	10.CDB.K.5/100
INgene q Clostridium botulinum	10.CBO.K.5/100
INgene q Clostridium chauvoei	10.CHA.K.5/100
INgene q Clostridium haemolyticum	10.CLH.K.5/100
INgene q Clostridium novyi	10.CNO.K.5/100
INgene q Clostridium septicum	10.CSE.K.5/100
INgene q Contagious Ecthyma	13.ORF.K.5/100
INgene q Corynebacterium pseudotuberculosis	10.COR.K.5/100
INgene q Coxiella burnetii	10.COX.K.5/100
INgene q Cryptosporidium parvum	10.CPA.K.5/100
INgene q Cryptosporidium spp.	10.CRY.K.5/100
INgene q Dichelobacter nodosus	10.DIN.K.5/100
INgene q Eimeria spp.	10.EIM.K.5/100
INgene q Erysipelothrix rhusiopathiae	10.ERU.K.5/100
INgene q Fusobacterium necrophorus	10.FUS.K.5/100
INgene q Giardia intestinalis	10.GIN.K.5/100
INgene q Histophilus somni	10.HSO.K.5/100
INgene q Leukotoxin Mannheimia haemolytica	10.LKT.K.5/100
INgene q Listeria monocytogenes	10.LMO.K.5/100
INgene q M. bovis and S. aureus MULTIPLEX	10.XMA.K.5/100
INgene q Maedi Visna - CAEV	13.SRL.K.5/100
INgene q Mannheimia haemolytica	10.MAN.K.5/100
INgene q Mycobacterium avium complex	10.MAV.K.5/100
INgene q Mycobacterium bovis	10.MYB.K.5/100
INgene q Mycobacterium tuberculosis complex	10.MTB.K.5/100
INgene q Mycoplasma agalactiae	13.MYA.K.5/100
INgene q Mycoplasma mycoides	13.MMC.K.5/100
INgene q Mycoplasma ovipneumoniae	13.MOV.K.5/100
INgene q Mycoplasma ovis	13.MYO.K.5/100
INgene q Mycoplasma putrefaciens	13.MPU.K.5/100
INgene q Paeniclostridium sordelli	10.CSO.K.5/100
INgene q Paratuberculosis	10.PTB.K.5/100
INgene q Paratuberculosis (multiplex)	10.XPT.K.5/100
INgene q Pasteurella multocida	10.PAS.K.5/100
INgene q Pathogenic Leptospira	10.LEP.K.5/100
INgene q Piroplasma	10.PIR.K.5/100
INgene q Prototheca spp.	10.PRT.K.5/100
INgene q Pseudomonas aeruginosa	10.PSE.K.5/100
INgene q Rotavirus A	10.RTA.K.5/100
INgene q Salmonella abortus ovis	13.SAB.K.5/100
INgene q Salmonella enterica	10.SEN.K.5/100

Product	Article No.
INgene q Salmonella infantis	10.STI.K.5/100
INgene q Staphylococcus aureus	10.SAU.K.5/100
INgene q Staphylococcus epidermidis	10.SEP.K.5/100
INgene q Staphylococcus haemolyticus	10.SHA.K.5/100
INgene q Streptococcus agalactiae	10.SAG.K.5/100
INgene q Streptococcus dysgalactiae	10.SDY.K.5/100
INgene q Streptococcus equi	10.SEQ.K.5/100
INgene q Streptococcus uberis	10.SUB.K.5/100
INgene q Toxoplasma gondii	10.TOX.K.5/100

All kits are Real-Time PCRs (2 formats: 50 and 100 reactions).

Exceptions:

* 100 reactions format only

* conventional PCR, 50 reactions format only

PCR Kits for SWINE



Product	Article No.
INgene q Actinobacillus pleuropneumoniae	11.ABP.K.5/100
INgene q Actinobacillus suis	11.ASU.K.5/100
INgene q Anaplasma spp.	10.ANS.K.5/100
INgene q ASFV (PPA) *	11.PPA.K.5TX/Q
INgene q Atypical Porcine Pestivirus	11.APP.K.5/100
INgene Bacteroides fragilis enterotoxina	10.BFT.K.5/100
INgene q B. hyodysenteriae and B. pilosicoli	11.XBR.K.5/100
INgene q Bordetella bronchiseptica	10.BBR.K.5/100
INgene q Brachyspira hyodysenteriae	11.BHY.K.5/100
INgene q Brachyspira intermedia	10.BIN.K.5/100
INgene q Brachyspira pilosicoli	10.BPI.K.5/100
INgene q Brachyspira spp.	10.BRA.K.5/100
INgene BRUCE-LADDER SUIS *	11.BSu.K.5/50
INgene BRUCE-LADDER V *	10.BRU.K.5/50
INgene q Brucella spp.	10.BSP.K.5/100
INgene q Brucella suis	11.BSI.K.5/100
INgene q Brucella Typing *	10.BRM.K.5TC/Q
INgene q Brucella Typing ROX *	10.BRM.K.5TX/Q
INgene q Campylobacter coli	10.CAM.K.5/100
INgene q Campylobacter jejuni	10.CJE.K.5/100
INgene q Chlamydia abortus	10.CAB.K.5/100
INgene q Chlamydiaceae	10.CHL.K.5/100
INgene q Clostridioides difficile Toxin A	10.CDA.K.5/100
INgene q Clostridioides difficile Toxin B	10.CDB.K.5/100
INgene q Clostridium botulinum	10.CBO.K.5/100
INgene q Clostridium chauvoei	10.CHA.K.5/100
INgene q Clostridium haemolyticum	10.CLH.K.5/100
INgene q Clostridium novyi	10.CNO.K.5/100
INgene q Clostridium septicum	10.CSE.K.5/100
INgene q Coxiella burnetii	10.COX.K.5/100
INgene q Cryptosporidium parvum	10.CPA.K.5/100
INgene q Cryptosporidium spp.	10.CRY.K.5/100
INgene q Cystoisospora suis	11.ISU.K.5/100
INgene q E. coli AIDA & EAST	11.XAD.K.5/100
INgene q Eimeria spp.	10.EIM.K.5/100
INgene q Erysipelothrix rhusiopathiae	10.ERU.K.5/100

Product	Article No.
INgene q Glaesserella parasuis	11.HPS.K.5/100
INgene q Hepatitis E virus	11.HEP.K.5/100
INgene q Influenza A virus	10.IFA.K.5/100
INgene q Influenza D virus	10.IFD.K.5/100
INgene q Lawsonia intracellularis	11.LAW.K.5/100
INgene q Leukotoxin Mannheimia haemolytica	10.LKT.K.5/100
INgene q Listeria monocytogenes	10.LMO.K.5/100
INgene q Mycobacterium avium complex	10.MAV.K.5/100
INgene q Mycobacterium bovis	10.MYB.K.5/100
INgene q Mycobacterium tuberculosis complex	10.MTB.K.5/100
INgene q Mycoplasma hyopneumoniae	11.MHP.K.5/100
INgene q Mycoplasma hyorhinis	11.MHR.K.5/100
INgene q Mycoplasma hyosynoviae	11.MHS.K.5/100
INgene q Mycoplasma suis	11.MSU.K.5/100
INgene q Paeniclostridium sordelli	10.CSO.K.5/100
INgene q Pasteurella multocida	10.PAS.K.5/100
INgene q Pathogenic Leptospira	10.LEP.K.5/100
INgene q PCV2	11.PC2.K.5/100
INgene q PCV3	11.PC3.K.5/100
INgene q PEDV	11.PED.K.5/100
INgene q Porcine Parvovirus	11.PoP.K.5/100
INgene q PRRS NA-EU *	11.PRD.K.5TX/Q
INgene q PRRS Universal *	11.PRU.K.5TX/Q
INgene q Pseudomonas aeruginosa	10.PSE.K.5/100
INgene q Rhodococcus equi	10.REQ.K.5/100
INgene q Rotavirus A	10.RTA.K.5/100
INgene q Rotavirus C	11.RTC.K.5/100
INgene q Salmonella enterica	10.SEN.K.5/100
INgene q Seneca Virus Valley	11.SVV.K.5/100
INgene q Staphylococcus aureus	10.SAU.K.5/100
INgene q Staphylococcus hyicus	11.STH.K.5/100
INgene q Streptococcus suis	11.SSU.K.5/100
INgene q Suid Alpha Herpesvirus (Aujeszky)	11.SHV.K.5/100
INgene q Swine Delta Coronavirus	11.SDC.K.5/100
INgene q Swine Pox Virus	11.SWP.K.5/100
INgene q TGEV	11.TGV.K.5/100
INgene q Trichuris suis	11.TSU.K.5/100

All kits are Real-Time PCRs (2 formats: 50 and 100 reactions).
 Exceptions:
 * 100 reactions format only
 * conventional PCR, 50 reactions format only

PCR Kits for POULTRY



Product	Article No.
INgene q Avian Coronavirus (IBV & TuCV)	18.ACO.K.5/100
INgene q Avibacterium paragallinarum	18.AVI.K.5/100
INgene q Bordetella avium	18.BIU.K.5/100
INgene q Brachyspira intermedia	10.BIN.K.5/100
INgene q Brachyspira pilosicoli	10.BPI.K.5/100
INgene q Brachyspira spp.	10.BRA.K.5/100
INgene q Campylobacter coli	10.CAM.K.5/100
INgene q Campylobacter hepaticus	18.CHE.K.5/100
INgene q Campylobacter jejuni	10.CJE.K.5/100
INgene q Campylobacter spp.	10.CPY.K.5/100
INgene q E. acervulina and E. praecox	18.EAP.K.5/100

Product	Article No.
INgene q E. maxima and E. mitis	18.EMM.K.5/100
INgene q E. tenella, necatrix & brunetti	18.XPO.K.5/100
INgene q Eimeria acervulina	18.EAC.K.5/100
INgene q Eimeria brunetti	18.EBR.K.5/100
INgene q Eimeria maxima	18.EMX.K.5/100
INgene q Eimeria mitis	18.EMI.K.5/100
INgene q Eimeria necatrix	18.ENE.K.5/100
INgene q Eimeria praecox	18.EPR.K.5/100
INgene q Eimeria spp.	10.EIM.K.5/100
INgene q Eimeria tenella	18.ETE.K.5/100
INgene q Fowlpox virus	18.FPO.K.5/100
INgene Histomonas meleagridis	18.HME.K.5/100
INgene q Inclusion body hepatitis (Adenovirus I)	18.FAD.K.5/100
INgene q Influenza A virus	10.IFA.K.5/100
INgene q M. gallisepticum and M. synoviae	18.XMG.K.5/100
INgene q Marek (MDV)	18.MRE.K.5/100
INgene q Mycobacterium avium complex	10.MAV.K.5/100
INgene q Mycobacterium tuberculosis complex	10.MTB.K.5/100
INgene q Mycoplasma gallisepticum	18.MGA.K.5/100
INgene q Mycoplasma synoviae	18.MSY.K.5/100
INgene q Ornithobacterium rhinotracheale	18.ORN.K.5/100
INgene q Pasteurella multocida	10.PAS.K.5/100
INgene q Riemerella anatipestifer	18.RIE.K.5/100
INgene q Salmonella enterica	10.SEN.K.5/100
INgene q Salmonella gallinarum	18.SGA.K.5/100
INgene q Salmonella infantis	10.STI.K.5/100
INgene q Salmonella pullorum	18.SPU.K.5/100

PCR Kits for PETS



Product	Article No.
INgene q Anaplasma phagocytophilum	10.APH.K.5/100
INgene q Anaplasma spp.	10.ANS.K.5/100
INgene q Babesia spp. pets	15.BPE.K.5/100
INgene q Bartonella henselae	16.BHE.K.5/100
INgene q Bartonella spp.	16.BAR.K.5/100
INgene q Bordetella bronchiseptica	10.BBR.K.5/100
INgene q Borrelia burgdorferi	10.BBS.K.5/100
INgene BRUCE-LADDER V *	10.BRU.K.5/50
INgene q Brucella canis	15.BRC.K.5/100
INgene q Brucella spp.	10.BSP.K.5/100
INgene q Brucella Typing	10.BRM.K.5TC/Q
INgene q Brucella Typing ROX	10.BRM.K.5TX/Q
INgene q Campylobacter coli	10.CAM.K.5/100
INgene q Campylobacter jejuni	10.CJE.K.5/100
INgene q Campylobacter spp.	10.CPY.K.5/100
INgene q Canine Circovirus	15.CaC.K.5/100
INgene q Canine Coronavirus	15.CCO.K.5/100
INgene q Canine Distemper virus	15.CaD.K.5/100
INgene q Canine Herpesvirus	15.CHV.K.5/100
INgene q Canine Parainfluenza virus	15.CPI.K.5/100
INgene q Canine Parvovirus 2	15.CaP.K.5/100
INgene q Cryptosporidium spp.	10.CRY.K.5/100

Product	Article No.
INgene q Cytauxzoon felis	16.CYF.K.5/100
INgene q Cytauxzoon spp.	16.CYT.K.5/100
INgene q Dirofilaria immitis	10.DIM.K.5/100
INgene q Dirofilaria repens	10.DRE.K.5/100
INgene q Ehrlichia canis	15.EHC.K.5/100
INgene q Ehrlichia spp.	10.EHR.K.5/100
INgene q Encephalitozoon cuniculi	10.ECU.K.5/100
INgene q Feline Calicivirus	16.FeC.K.5/100
INgene q Feline Coronavirus	16.FCo.K.5/100
INgene q Feline Herpesvirus	16.FHV.K.5/100
INgene q Feline Immunodeficiency virus	16.FeI.K.5/100
INgene q Feline Leukemia Virus	16.FeL.K.5/100
INgene q Feline Panleukopenia virus	16.FPL.K.5/100
INgene q Giardia intestinalis	10.GIN.K.5/100
INgene q Haemoplasma spp. Pets	10.HAE.K.5/100
INgene q Leishmania spp.	15.LEI.K.5/100
INgene q Mycoplasma haemocanis	15.MHC.K.5/100
INgene q Mycoplasma haemofelis	16.MHF.K.5/100
INgene q Neospora caninum	10.NEO.K.5/100
INgene q Pasteurella multocida	10.PAS.K.5/100
INgene q Pathogenic Leptospira	10.LEP.K.5/100
INgene q Piroplasma	10.PIR.K.5/100
INgene q Toxoplasma gondii	10.TOX.K.5/100

All kits are Real-Time PCRs (2 formats: 50 and 100 reactions).
 Exceptions:
 * 100 reactions format only
 * conventional PCR, 50 reactions format only

PCR Kits for EQUINE



Product	Article No.
INgene q Anaplasma spp.	10.ANS.K.5/100
INgene q Babesia caballi	14.BCA.K.5/100
INgene BRUCE-LADDER V *	10.BRU.K.5/50
INgene q Brucella spp.	10.BSP.K.5/100
INgene q Brucella Typing	10.BRM.K.5TC/Q
INgene q Brucella Typing ROX	10.BRM.K.5TX/Q
INgene q Campylobacter coli	10.CAM.K.5/100
INgene q Campylobacter jejuni	10.CJE.K.5/100
INgene q Chlamydiaeae	10.CHL.K.5/100
INgene q Clostridioides difficile Toxin A	10.CDA.K.5/100
INgene q Clostridioides difficile Toxin B	10.CDB.K.5/100
INgene q Corynebacterium pseudotuberculosis	10.COR.K.5/100
INgene q Coxiella burnetii	10.COX.K.5/100
INgene q Cryptosporidium spp.	10.CRY.K.5/100
INgene q Equine Herpesvirus 1	14.HE1.K.5/100
INgene q Equine Herpesvirus 2	14.HE2.K.5/100
INgene q Equine Herpesvirus 4	14.HE4.K.5/100
INgene q Influenza A virus	10.IFA.K.5/100
INgene q Listeria monocytogenes	10.LMO.K.5/100
INgene q Pasteurella multocida	10.PAS.K.5/100
INgene q Pathogenic Leptospira	10.LEP.K.5/100
INgene q Piroplasma	10.PIR.K.5/100
INgene q Pseudomonas aeruginosa	10.PSE.K.5/100
INgene q Rhodococcus equi	10.REQ.K.5/100
INgene q Rhodococcus equi vapA	14.REV.K.5/100
INgene q Rotavirus A	10.RTA.K.5/100

Product	Article No.
INgene q Salmonella enterica	10.SEN.K.5/100
INgene q Staphylococcus aureus	10.SAU.K.5/100
INgene q Streptococcus equi	10.SEQ.K.5/100
INgene q Taylorella equigenitalis	14.TAY.K.5/100
INgene q Theileria equi	14.TEQ.K.5/100

All kits are Real-Time PCRs (2 formats: 50 and 100 reactions).
 Exceptions:
 * 100 reactions format only
 * conventional PCR, 50 reactions format only

PCR Kits for RABBIT



Product	Article No.
INgene Bacteroides fragilis enterotoxina	10.BFT.K.5/100
INgene q Bordetella bronchiseptica	10.BBR.K.5/100
INgene BRUCE-LADDER V*	10.BRU.K.5/50
INgene q Brucella spp.	10.BSP.K.5/100
INgene q Brucella Typing	10.BRM.K.5TC/Q
INgene q Brucella Typing ROX	10.BRM.K.5TX/Q
INgene q Campylobacter coli	10.CAM.K.5/100
INgene q Campylobacter jejuni	10.CJE.K.5/100
INgene q Chlamydia abortus	10.CAB.K.5/100
INgene q Chlamydiaeae	10.CHL.K.5/100
INgene q Clostridioides difficile Toxin A	10.CDA.K.5/100
INgene q Clostridioides difficile Toxin B	10.CDB.K.5/100
INgene q Clostridium spiroforme	17.CSP.K.5/100
INgene q Coxiella burnetii	10.COX.K.5/100
INgene q Cryptosporidium spp.	10.CRY.K.5/100
INgene q Eimeria magna	17.EMA.K.5/100
INgene q Eimeria spp.	10.EIM.K.5/100
INgene q Encephalitozoon cuniculi	10.ECU.K.5/100
INgene q Listeria monocytogenes	10.LMO.K.5/100
INgene q Myxoma virus	17.MYX.K.5/100
INgene q Pasteurella multocida	10.PAS.K.5/100
INgene q Pathogenic Leptospira	10.LEP.K.5/100
INgene q Pseudomonas aeruginosa	10.PSE.K.5/100
INgene q RHDV new variant	17.RHD.K.5/100
INgene q Rotavirus A	10.RTA.K.5/100
INgene q Salmonella enterica	10.SEN.K.5/100
INgene q Staphylococcus aureus	10.SAU.K.5/100

PCR Kits for AQUACULTURE

Product	Article No.
INgene q Aeromonas hydrophila	60.AHY.K.5/100
INgene q Aeromonas salmonicida	60.ASA.K.5/100
INgene q Flavobacterium psychrophilum	60.FPS.K.5/100
INgene q Tenacibaculum maritimum	60.TMA.K.5/100
INgene q VHSV	60.VHS.K.5/100
INgene q Vibrio anguillarum	60.VAN.K.5/100
INgene q Yersinia ruckeri	60.YRU.K.5/100

PCR Kits for MINK

Product	Article No.
INgene q AMDV	09.AMD.K.5/100



INSTRUMENTS

ELISA Analyzers

Comprehensive diagnostic solutions improve lab efficiency and minimize overall costs. We offer precise, compact and cost-efficient instruments supported with outstanding customer service.

These innovative, industry-leading instruments - ThunderBolt® and The BOLT™ - are the standard platforms for our ELISA-based analytical test kits including allergens, food pathogens, mycotoxins, veterinary drug residues, and animal health kits. We are delighted to provide one of the most complete, integrated, and innovative test offerings in the market.

ThunderBolt®



The ThunderBolt® is an innovative 2-plate, fully automated, open platform that is compact and cost efficient. The user friendly and flexible software is capable of programming a broad range of protocols. The ThunderBolt® is available for both ELISA and Chemiluminescent (CLIA) applications.

Key Benefits

- Fully-automated: load and walk away
- High capacity: 192 samples
- Open architecture: program any ELISA or Chemiluminescent (CLIA) protocol* (CLIA protocols require ELISA+CLIA reader option)
- Adaptable: capable of running many different protocols in a single batch
- Built-in reader: ultra-compact and fully-automated reader options
- Compact: smallest and lightest instrument in its class
- User-friendly and flexible software
- Extensive configuration – run up to 8 protocols in a single batch
- On-board camera: monitor internal operations in real-time

The Bolt™



The Bolt™, a one-plate ELISA+CLIA processor, shares many features of the ThunderBolt®, with a more customizable, lower throughput and cost-effective design. Our interactive user-friendly software provides a simple laboratory experience for instrument operation.

Key Benefits

- Space saving design – fits standard 60 cm lab bench
- 96 sample capacity
- Program any EIA and CLIA protocol
- High precision syringes
- Low consumables costs (no disposable tips)
- Exterior status indicator light
- Connectivity to a laboratory information system (LIS)

Modular Design with Optional:

- Convention incubator
- Linear shaker
- ELISA or ELISA+ CLIA Reader*

* CLIA protocols require ELISA + CLIA reader option



ThunderBolt®

Specifications	
Intelligent Racks	Automatic sample location management
System Architecture	Open, fully customizable
High Precision Micro-Syringe	Aspirate 1uL with $\leq 3\%$ CV
On-board Reader(s)	Spectrophotometer or Spectrophotometer + Fluorescence Combo Reader
Forced Convection Incubator	Evenly heats using forced air to eliminate "Edge Effect"
On-board Camera	Probe-mounted camera allows remote troubleshooting
Sliding Sample Tray	Easy loading and unloading of samples
Built-in Barcode Reader	Streamline loading and decrease sample tracking errors
Orbital MTP Shaker	Precise adherence to assay protocols
Small Footprint	Fits on a 60cm deep standard laboratory bench; weight: 30 kg (65 lbs)
Sample Capacity	192 patient sample positions
User Interface	MS Windows Graphical User Interface (Windows 7 or above)
CE Marked	Yes
Article No.	00300



The Bolt™

Specifications	
System Architecture	Open, fully customizable
High Precision Micro-Syringe	Aspirate 1uL with $\leq 3\%$ CV
On-board Reader(s)	Spectrophotometer or Spectrophotometer + Fluorescence Combo Reader
Forced Convection Incubator	Evenly heats to eliminate "Edge Effect"
Linear Shaker	Precise adherence to assay protocols / No-spill design
Small Footprint	Fits on a 60cm deep standard laboratory bench; weight: 27 kg (59.5 lbs)
Sample Capacity	96 patient sample positions
User Interface	MS Windows Graphical User Interface (Windows 7 or above)
CE Marked	Yes
Article No.	00500

Nucleic Acid Purification System: GSD Auto-Pure 96

GSD Auto-Pure 96 Nucleic Acid Purification System is an automatic extraction and purification instrument for DNA/RNA, proteins and cells. The purification technology is automated and enables high-speed, high-quality processing with no cross-contamination between the samples or reagent carry-over. Combined with different kinds of magnetic bead nucleic acid extraction kits, it can operate 1-96 samples or simultaneously and extract DNA and RNA rapidly, in 30-60 minutes.



Key Benefits

- Simple, intelligent operation
- High quality and rapid extraction
- Multiple pollution control
- Remote monitoring by app
- Reliable structure and stable operation

Specifications	
Article No.	GSD-Auto-Pure96
Throughput	1-96
Process volume	50-1000 μ l
Consumables	Deepwell plate, Elution plate, Magnetic tip comb

Real-time PCR System: AriaMX™

The AriaMx Real-Time PCR system is a fully integrated qPCR solution for amplification, detection, and data analysis, combining a novel thermal cycler, an advanced optical system with LED excitation source, and comprehensive data analysis software.



Key Benefits

- Usable with many fluorescence detection chemistries, including SYBR Green and EvaGreen dyes, and fluorogenic probe systems such as TaqMan
- Proprietary rapid hot-start enzymes and fastest industry high-resolution melt reagents
- Intuitive operation with a touch screen interface
- Modular optics and open reagent platform for increased agility
- Multiplex capability with six filters for five plexing and two to five channels
- Intuitive open-source software and robust data analysis with proprietary algorithms

RapidScan ST5-W Lateral Flow Assay Reader

Companies and laboratories that use lateral flow devices as a rapid test method need to obtain quick and reliable results for contamination testing.

The RapidScan ST5-W Lateral Flow Assay Reader is an accurate, easy to use and highly flexible imaging platform used for lateral flow assay analysis. The instrument was designed specifically for field and in-process testing applications that require qualitative and quantitative test results.



Key Benefits

- **Ease-of-use:** the reader is easy to set up and operate, featuring an intuitive user interface with a colour touchscreen display.
- **Quantitative results** are obtained within a few minutes. Data can be stored on the reader then exported through a USB port.
- **Applications:** the reader is compatible with a wide range of allergen, GMO and glyphosate strip tests offered by Gold Standard Diagnostics. Additionally, the INgezim ASF CROM Ag, LFA for the detection of ASFV antigen in porcine blood samples, is also validated on the RapidScan reader.

Specifications

Article No.	LFSCAN002
Size and Weight	11x14x21 cm, 930 g
Display	5" LCD touch screen

GSD Absorbance 96 ELISA Reader **NEW!**

GSD Absorbance 96 is a new category of plate readers with the mission to simplify the workflow in the laboratory. The reader delivers a robust performance and accurate results with a small footprint.



Key Benefits

- 7x smaller than the smallest comparable reader
- Maintenance-free user experience
- 96 individual detection units enabling simultaneous signal detection
- Variety of available wavelength combinations
- No license fee for software use

Specifications

Article No.	EIAREAD002
Size and weight	9.6 x 15.4 x 5.5 cm, 900g
Microplates types	96-well microplates
Wavelength selection	Example combinations (FWHM 10 nm): 450, 492, 562, 620 nm / 405, 450, 540, 630 nm / 492, 562, 605, 650 nm. Other filter combinations in the range of 400–1000 nm





